

# 2-085SL Swinghandle RS PrC SNAP-LINE

Tool-less installation, Key actuation, Round rods

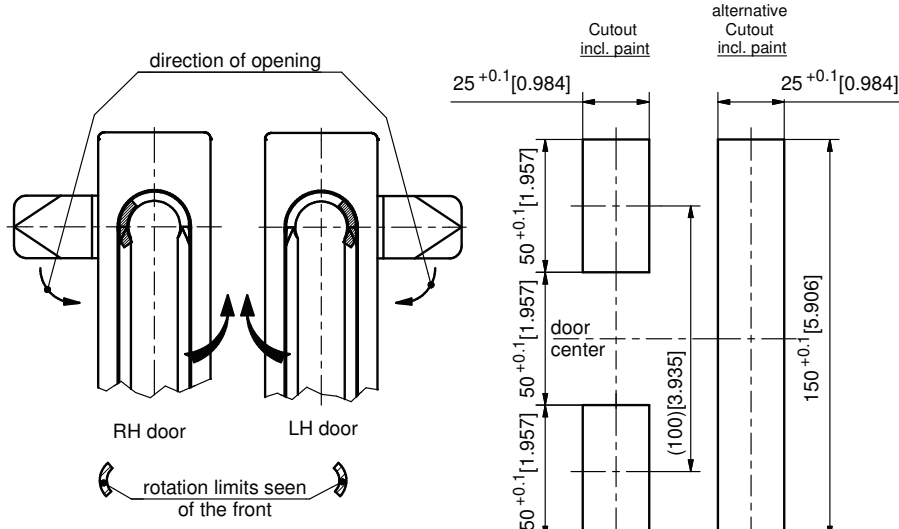


## Product Notes:

- Uses 3-point cam and round rods
- Low profile design
- Pre-assembled swinghandle (single or 3-point cam) can be inserted into cutout and with simple push secured in panel
- Limiting stop at 90° prevents the cam from being over rotated
- RH and LH application
- Uses round cylinder DIRAK 1333 with stainless steel dustcap
- Dimensions of cutout PrC - see Product System 3-010
- Screw-on - see Product System 2-077
- Other zinc die - see Product System 2-077SL

## Material:

- **Swinghandle:** Zinc Die, Black
- **Dish:** PA6, black
- **Rotating dish and bottom:** Zinc Die
- **Snap-wedges:** Sintered Metal, Geomet
- **Clamping pin:** Stainless Steel
- **Cylinder cam:** PA6, black
- **O-Ring:** PTFE



The cam rotation is limited to 90° RH or LH if single point or multi-point cams have a stop.

For tailored rods on product system 1-180 the length L-in case of symmetrical doors (as drawn) is:

$L = \frac{\text{clearance}-12\text{mm}[0.472]}{2[0.079]} - 30\text{mm}[1.181]$        $L = \frac{\text{clearance}-12\text{mm}[0.472]}{2[0.079]} + 30\text{mm}[1.181]$

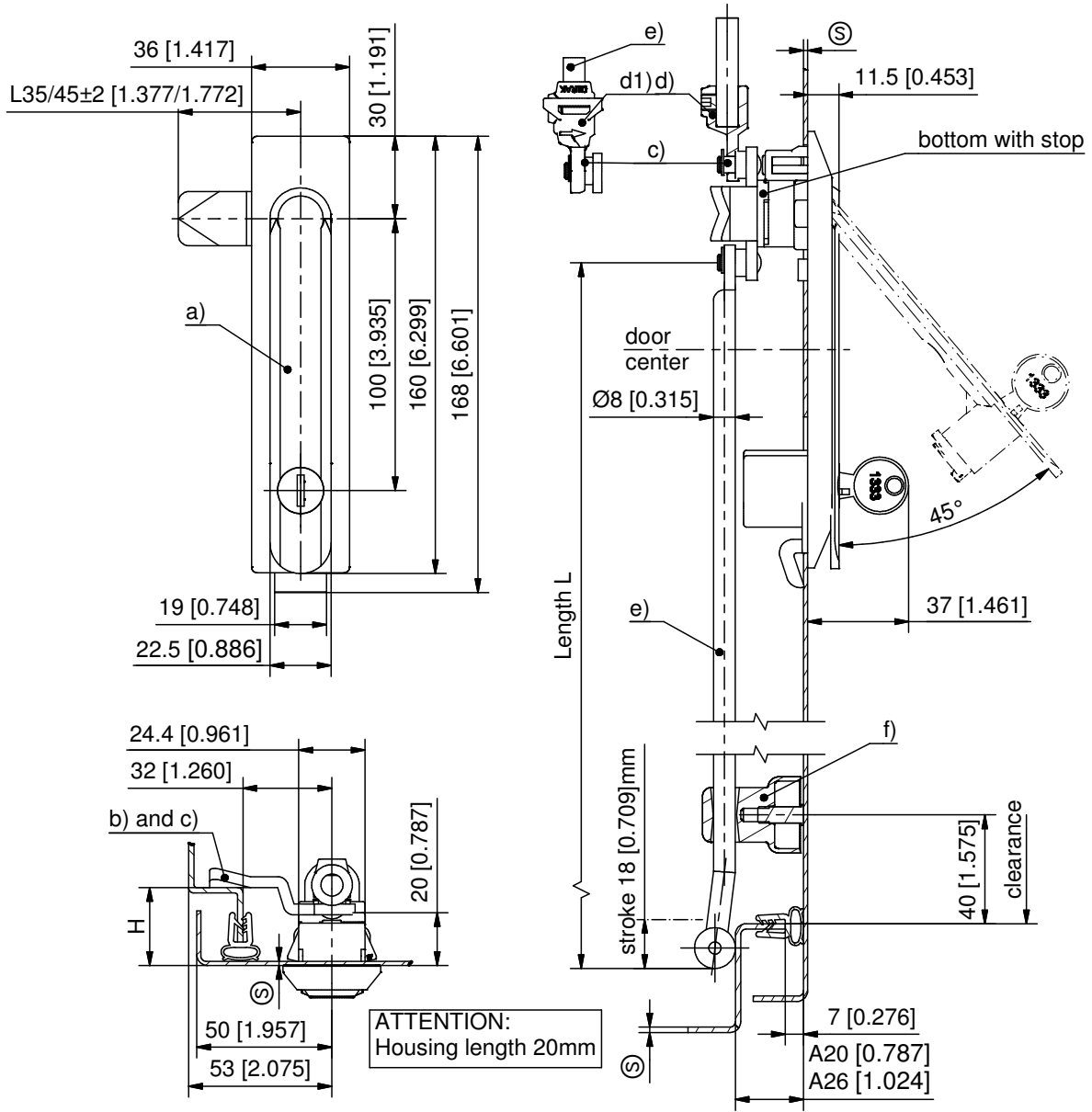
For tailored rods on product system 1-180 the length L-in case of rod control at the door center is:

$L = \frac{\text{clearance}-12\text{mm}[0.472]}{2[0.079]}$

| a) Swinghandle  | Clamping Range (S) | Part No.          | See Page            |
|---|--------------------|-------------------|---------------------|
| Installation can be done with cam attached                                    | 1.2 - 1.7          | 407-9606.00-00015 |                     |
| Installation can not be done with cam attached                                | 1.7 - 2.2          | 407-9606.00-00020 |                     |
| <b>Other (S)-dimensions on request</b>  |                    |                   |                     |
| b) Cams   |                    |                   | 01.42,01.100,01.102 |
| c) 3-point cam adapter with stop (incl. 2 c-clips and screw M6x10)            |                    | 200-9596          | 03.43               |
| c1) 4-point cam adapter with stop, with eye (incl. 2 c-clips and screw M6x10) |                    | 200-9595          | 03.43               |
| d) Adapter for round rods   |                    |                   | 03.50               |
| d1) Adapter for round rods  |                    |                   | 03.49               |
| e) Round rods   |                    |                   | 03.46, 03.47        |
| f) Rod guide for round rods   |                    |                   | 03.52, 03.53, 03.51 |
| Tool for uninstallation   |                    | 292-0306.80-02530 | 10.17               |

# 2-085SL Swinghandle RS PrC SNAP-LINE

Tool-less installation, Key actuation, Round rods



## Instructions for installation

**1** Guide swinghandle with pre-assembled cam through cutout

**2** swinghandle complete snapped in

**3** final position: fully snapped

The cam can be positioned by the rotating bottom according to RH/ LH application

