

1-500 Snap-Lock L30

Key operable, Push to close

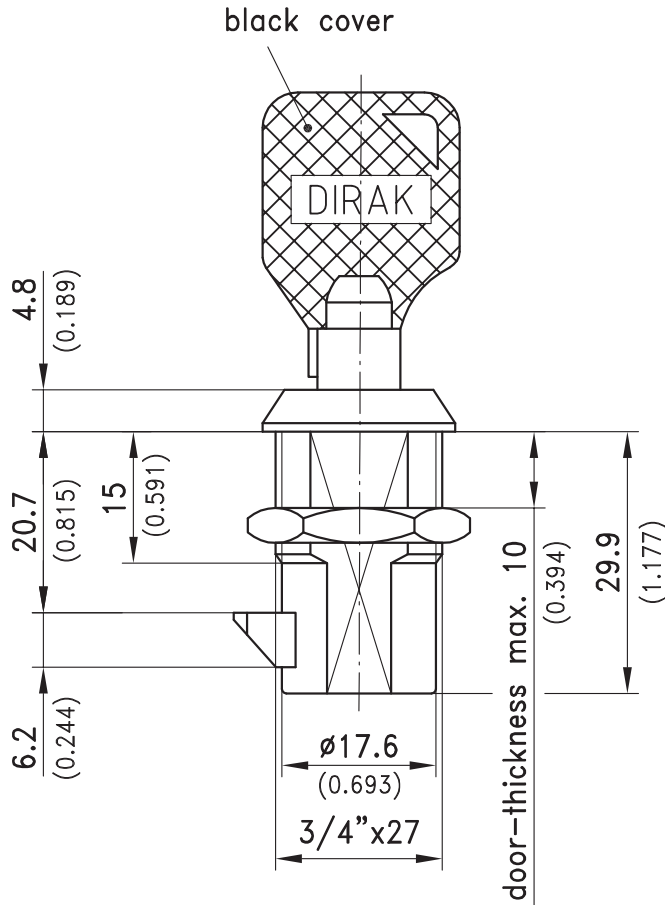


Product Notes:

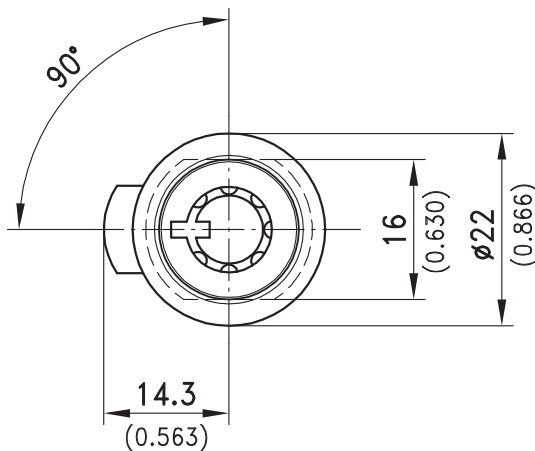
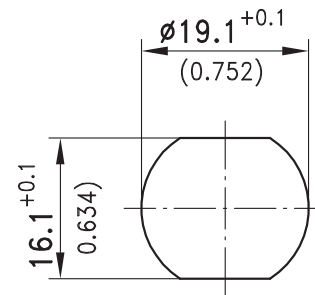
- Spring loaded cam allows push to close function
- Opens with special key
- Lock is supplied with nut and wide stabilizing washer located under nut

Material:

- **Snap-Lock:** Zinc Die, Chrome Plated
- **Washer:** Steel, Zinc Plated
- **Nut:** steel, Zinc Plated



Cutout



a) Snap-lock	Part No.
Keyed alike DIRAK D0205	264-9102
Keyed different	264-9101
All locks supplied with two keys	