

6-140 Bridge Clamp

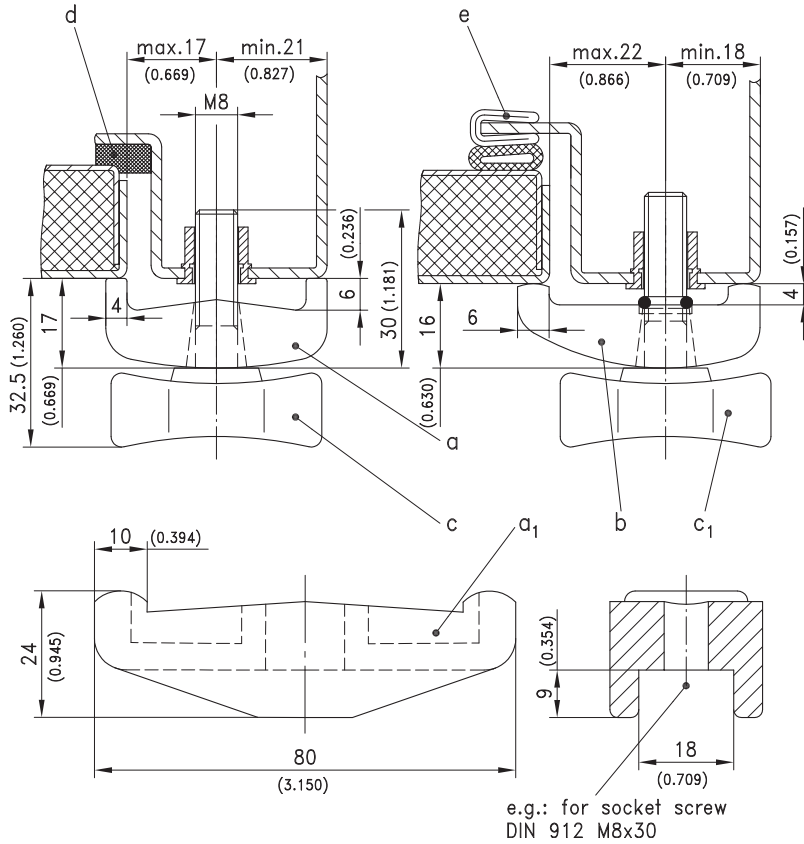
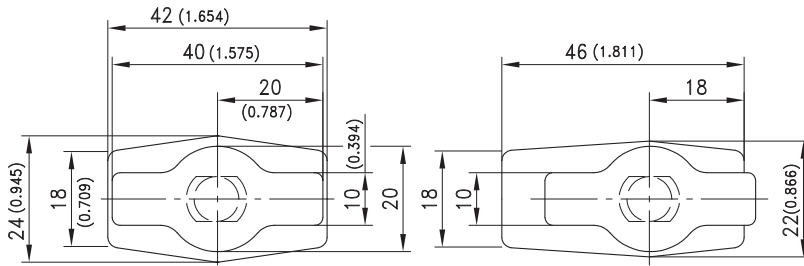


Product Notes:

- Large adjustment for machine doors
- Available O-ring for opening positioning of the bridge.
- Not for application with clamp a1).

Material:

- Bridge clamp and tommy screw: PA, Black



Version	Part No.	See Page
a) Bridge symmetrical	214-0101.03	
a1) Bridge symmetric and reinforced for clamping two doors / panels	214-0103.03	
b) Bridge asymmetrical	214-0102	
c) Tommy screw	214-0201.03	
c1) Tommy screw with O-ring	214-9001	
d) Rectangular Profiles		05.21
e) Groove Gasket	209-0202	05.14