

1-250 Pull and Lock Hook

Hand or tool operable, Compression, Vibration resistant

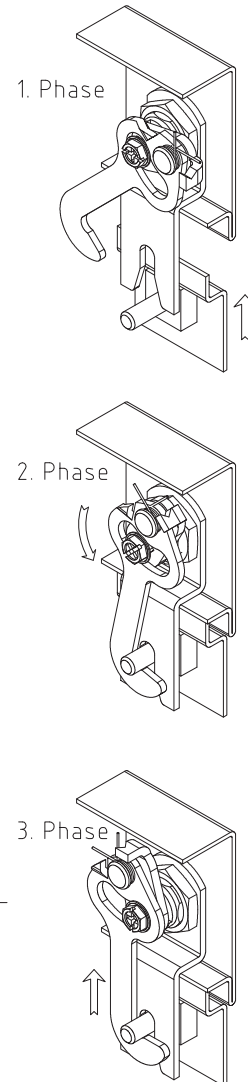
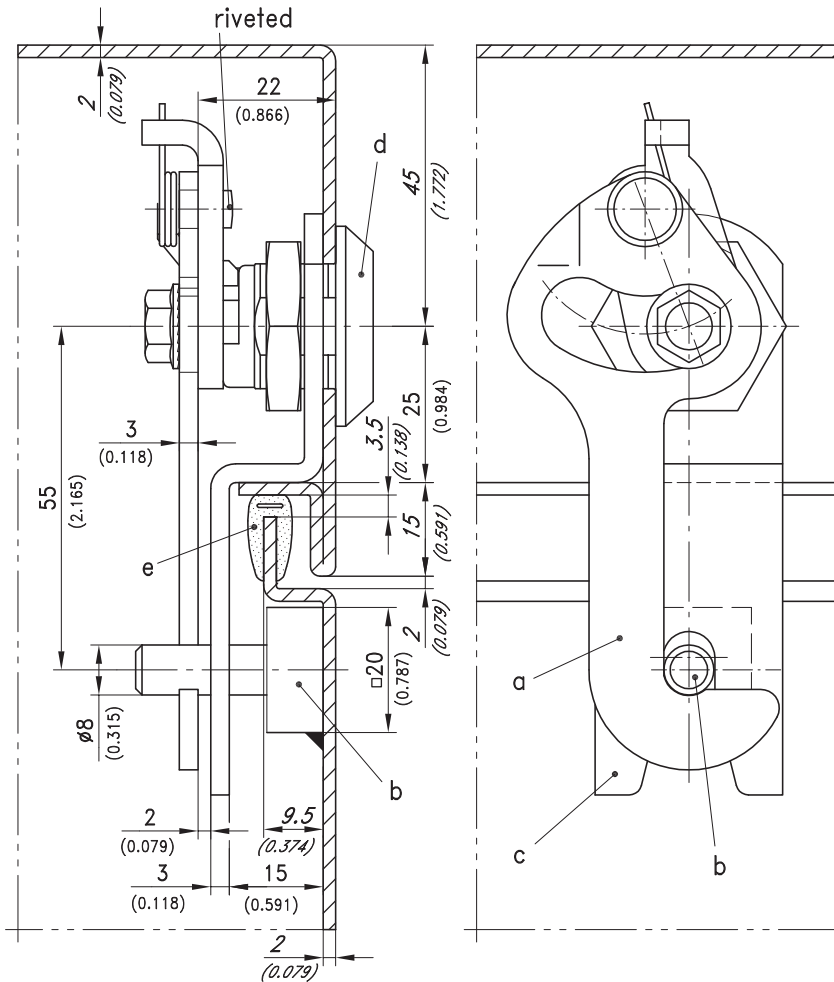


Product Notes:

- Pull and lock hook with compression
- Compression to 5mm with 90° turn
- Vibration resistant
- To latch - turn clockwise
- Torque ratio allows cylinder to operate latch. For more information on cylinders - contact DIRAK
- Latch can be operated with Quarter-Turns or handles - see Product System 1-100, 1-101, 1-140 to 1-154

Material:

- **Pull and lock hook:** Steel, Zinc Plated
- **Locking stub:** Steel, Zinc Plated
- **Line-up fork:** Steel, Zinc Plated



The latching- and compression process has 3 phases:
 1. phase: Open position.
 2. phase: Hook catches behind the frame pin and continuing the closing rotation, the hook is then being pulled automatically against the frame pin. The pulling stroke is 5mm.
 3. phase: At the end of rotation process the hook has a vibration proof latch behind the frame pin.

Version	Part No.	See Page
a) Pull and lock hook	200-9602	
b) Weld-on pin for pull and lock hook	200-3704	
Order separately:		
c) Line-up fork	200-3703	
d) Housings and inserts or handles		01.20, 01.98
e) Gasket	209-0302	05.10