

# 7-330 Slam Latch

Hand operable, Stainless Steel, Low profile

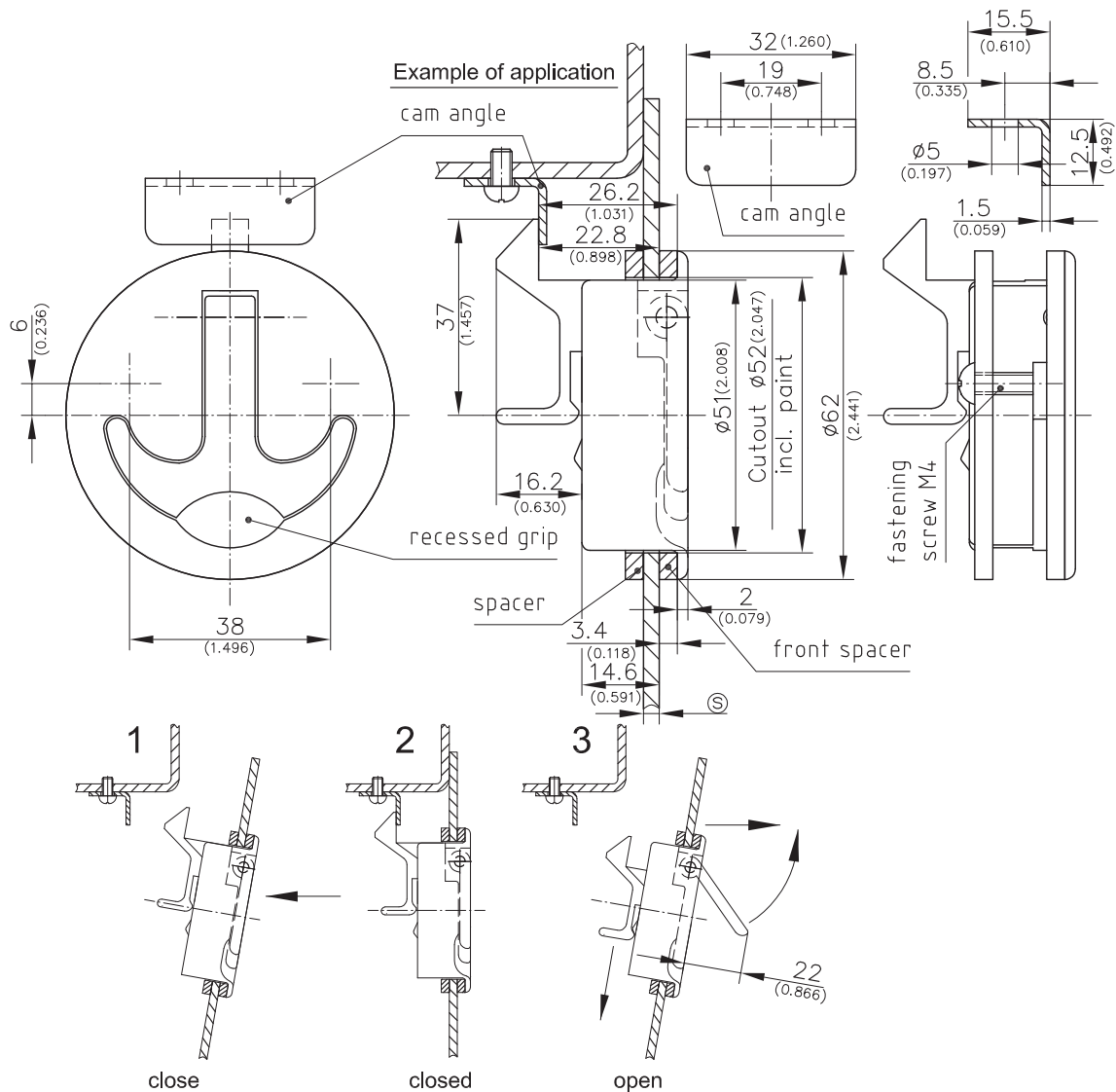


## Product Notes:

- Latch is completely Stainless Steel
- Low profile design
- Concave area below lever gives access to operating lever
- Latch can be unlocked one-off or permanent
- To unlatch, pull the lever up approximately 45°. If the lever is pulled 45° or less, the lever is spring loaded and will return to the closed flush position
- If the lever is pulled up over 45°, the latch will remain unlatched until the lever is pushed back into the flush position
- Latch can be unlatched from inside
- $\textcircled{S}$  dimension 3 to 21mm. If front spacer is not used,  $\textcircled{S}$  dimension is decreased by 3.4mm requiring use of shorter screws

## Material:

- **Housing, handle and latch:** AISI 316, Surface Polished
- **Screw, cam angle, pin and spring:** Stainless Steel
- **Spacer:** Nylon, Black



	$\textcircled{S}$ - Dimension	Part No.
Flush slam latch	3/0.118 to 21mm/0.827 (as drawn)	282-9601.00-00000