

1-300 Slam-Latch

Hand or tool operable, Push to close

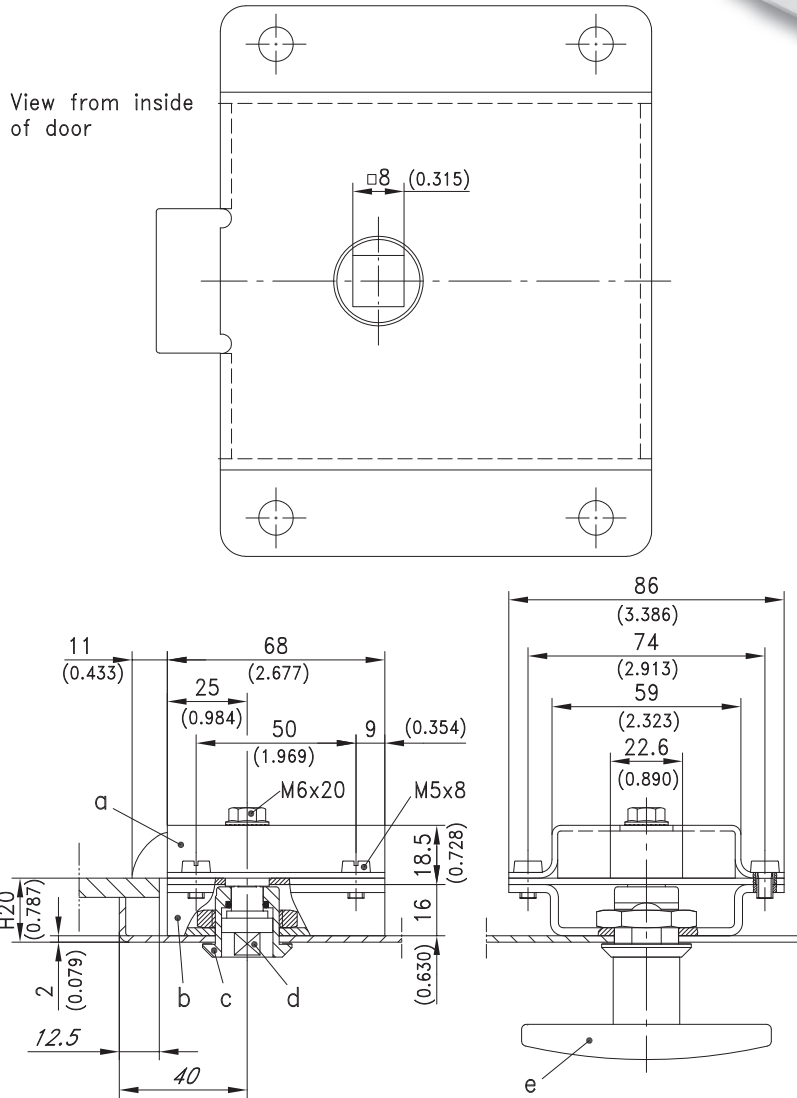


Product Notes:

- Open with key or handle
- Fasten to panel with screws or welding
- Open with tapered square key if assembled without insert

Material:

- **Housing:** Steel, Zinc Plated
- **Bolt:** Zinc Die, Zinc Plated
- **Lock support:** Steel, Zinc Plated



	Part No.	See Page
a) Latch	229-9101	
b) Lock support	229-0501	
c) Housing with nut	200-9005	01.20
d) Inserts		01.98
Optional:		
e) T-Handle with housing		01.69
e2) L-Handle with housing		01.65
e3) Wing handle with housing		01.56
Assembly hardware		10.22