

1-069SL Pull Latch Handle SNAP-LINE

Tool-less installation, Hand operable, Push to close

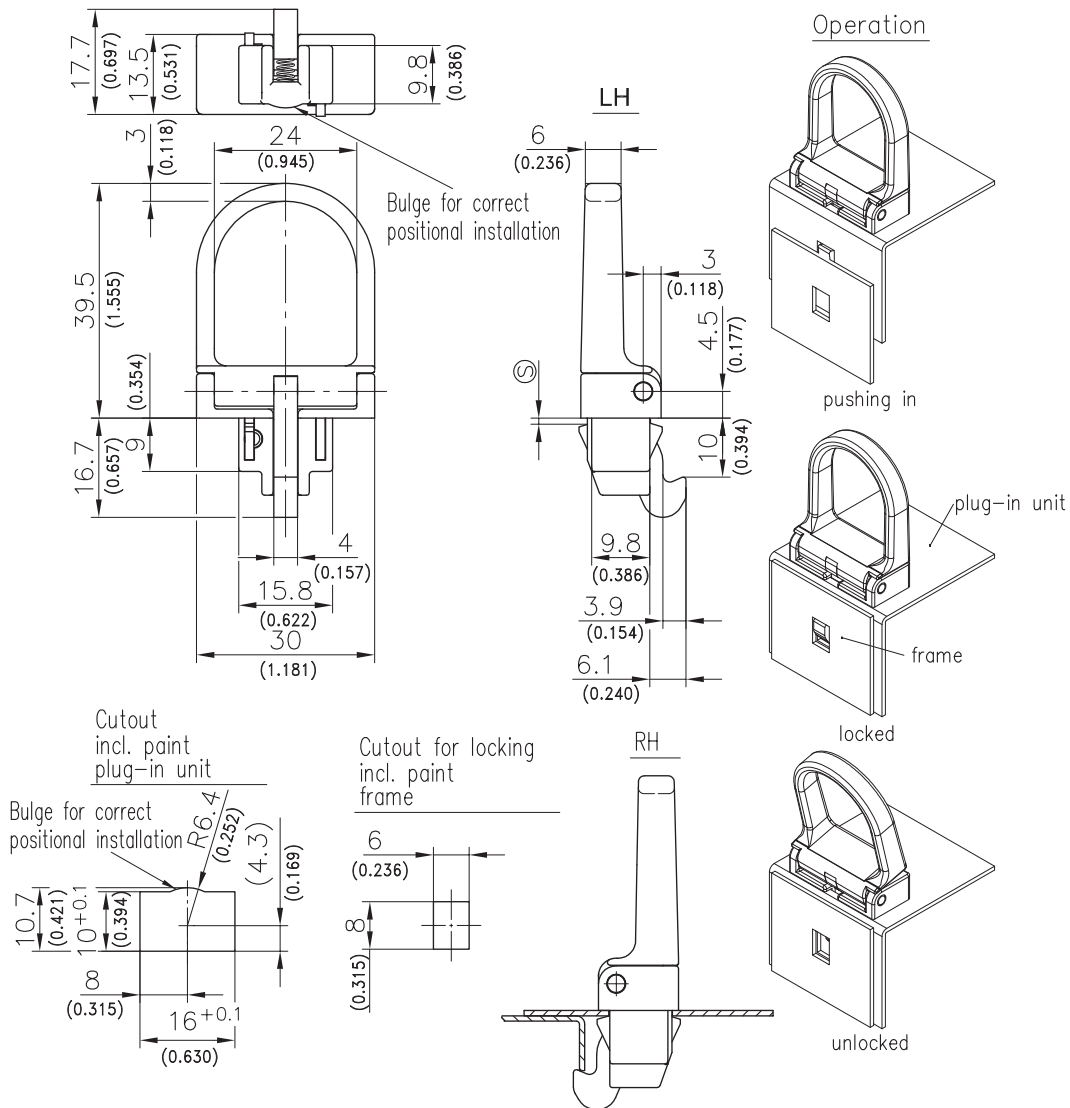


Product Notes:

- Pre-assembled handle latch is installed by a simple push into cutout
- RH and LH application
- When inserted into the panel the free running hook latches into the cutout and fastens the panel to the frame
- By tilting the handle, the hook is disengaged from the cutout and the panel can be pulled out
- **NOTE: The notch in the cutout is always opposite the bolt.**

Material:

- **Housing and handle:** Zinc Die, Matt Chrome Plated
- **Spring for insert:** Spring Steel
- **Wings:** Sintered Steel, Zinc Plated
- **Hook:** Sintered Steel, Zinc Plated



	Clamping Range [Ⓢ]	Part No.
Pull latch handle	0.8 - 1.0	480-9002.00-00810
	1.1 - 1.3	480-9002.00-01113
	1.4 - 1.6	480-9002.00-01416
Other [Ⓢ] dimension on request		