

# 6-160.01 Compression Latch

Hand operable with or without key, Push to close, Vibration resistant, Self adjusting compression

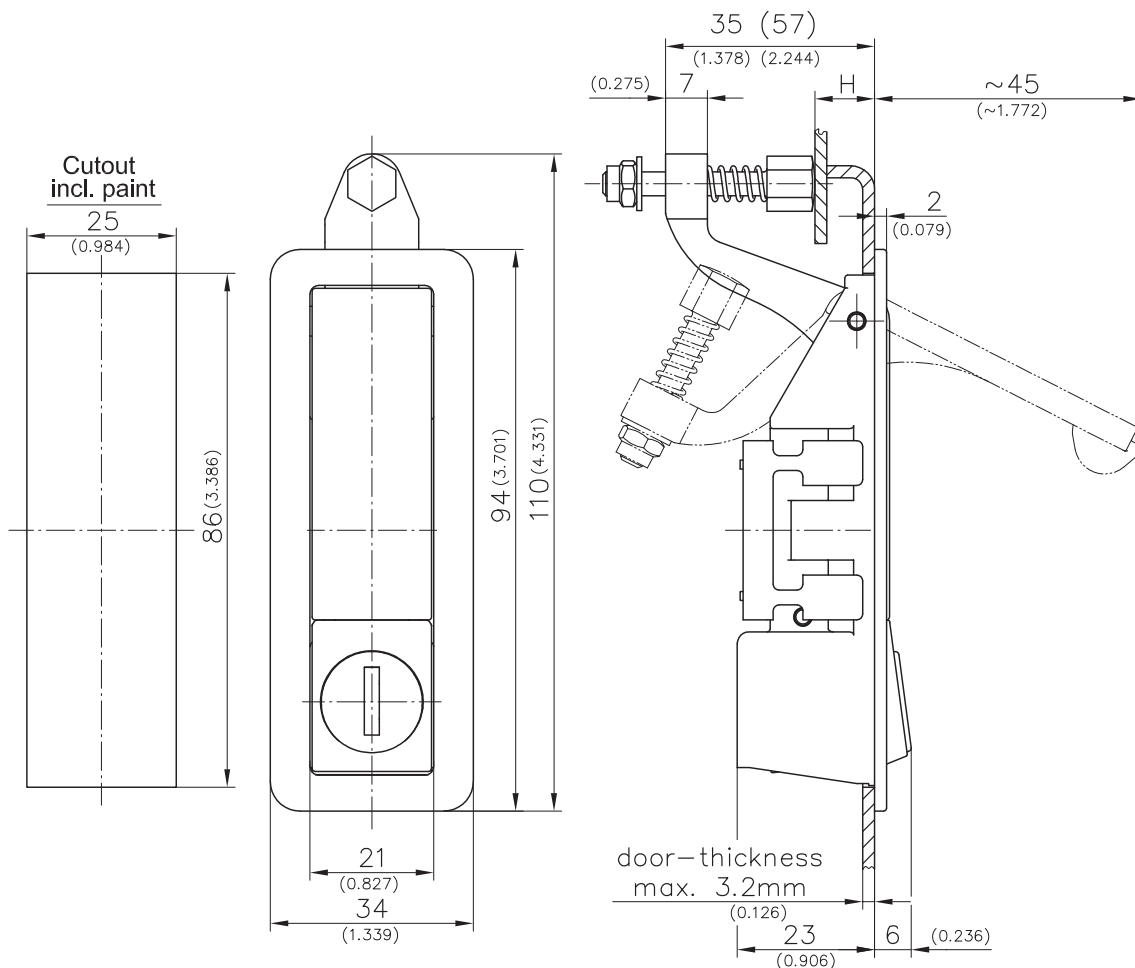


## Product Notes:

- Pre-assembled with fastening bracket
- Installed in the cutout and fastened from the outside of panel
- Latch cannot be removed from the panel in the closed position
- Spring loaded compression bolt provides consistent compression throughout product life cycle
- Vibration resistant according to DIN EN 61373.
- Other zinc die- see Product System 6-160
- Tool-less installation- see Product System 6-162SL

## Material:

- **Compression latch:** Zinc Die, Black
  - **Clamp:** steel, Zinc Plated
  - **Spring bolt:** Stainless Steel
  - **Spring:** Spring Steel
- Other colors on request

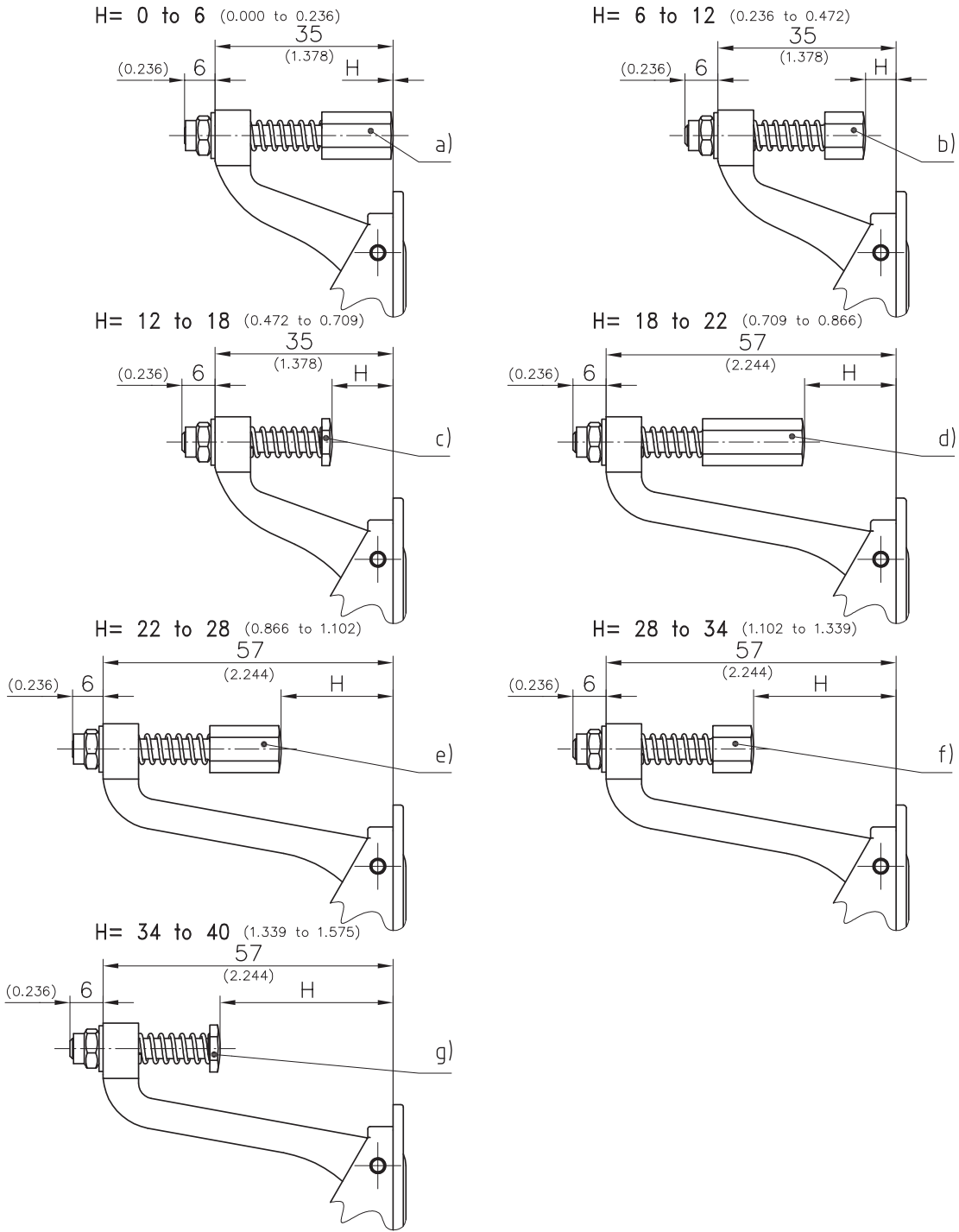


	H mm / inch	Non Locking	Keyed Alike DIRAK 1333*	Keyed Different*
a)	0-6 / 0-0.236	282-9413.00-00003	282-9414.00-00003	282-9415.00-00003
b)	6-12 / 0.236-0.472	282-9413.00-00009	282-9414.00-00009	282-9415.00-00009
c)	12-18 / 0.472-0.709	282-9413.00-00015	282-9414.00-00015	282-9415.00-00015
d)	18-22 / 0.709-0.866	282-9413.00-00020	282-9414.00-00020	282-9415.00-00020
e)	22-28 / 0.866-1.102	282-9413.00-00025	282-9414.00-00025	282-9415.00-00025
f)	28-34 / 1.102-1.339	282-9413.00-00031	282-9414.00-00031	282-9415.00-00031
g)	34-40 / 1.339-1.575	282-9413.00-00037	282-9414.00-00037	282-9415.00-00037

\*With stainless dust-shutter.

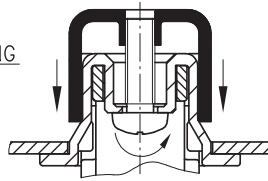
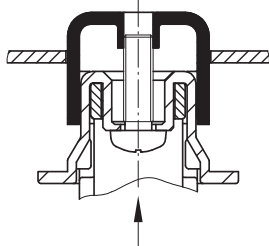
# 6-160.01 Compression Latch

Hand operable with or without key, Push to close, Vibration resistant, Self adjusting compression

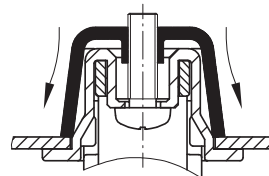


## Assembling situation

Slide latch through the cutout **WITHOUT DIS-ASSEMBLING** the bracket...



...rotate screw from outside...



...by rotating the screw the bracket will spread automatically.