

6-1381 Flush Mounted Trap-Door Latch

Hand operable with or without tool, Low profile, Safety insert



Product Notes:

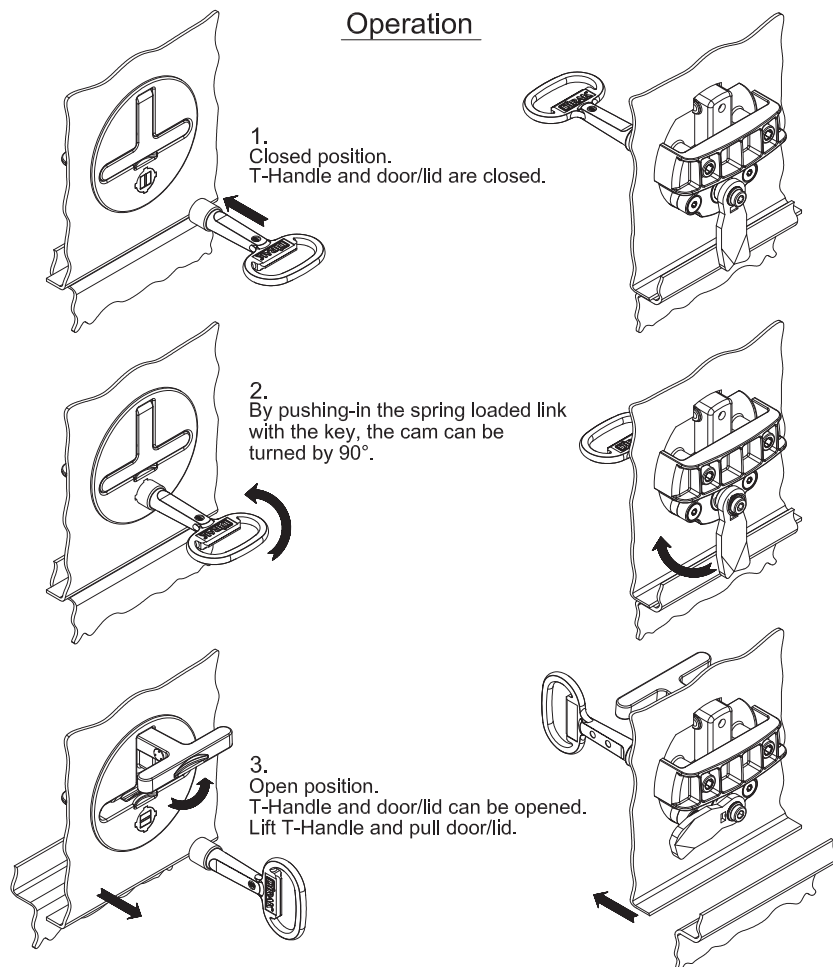
- Vibration resistant
- Integrated T-handle with 95° opening angle
- T-handle width - 25mm (0.984)
- Locked when closed
- Rubber stop prevents handle from rattling
- Smooth surface minimizes dirt accumulation
- Mounted with bracket and two M6 allen screws, DIN EN ISO 4762
- Cutout pattern prevents rotation
- Door thickness maximum of $T_s=6\text{mm}$ (0.236) with the M6x16 screw
- **Note:**
H-dimension of cam must be $\geq 14\text{mm}$

Material:

- **Housing and T-handle:** Zinc Die, Chrome Plated
- **Insert:** Zinc Die, Chrome Plated
- **Insert:** Stainless Steel AISI 303



Operation



	Part No.	See Page
a) Latch with locking device (square 8mm) and Fastening Bracket	213-9402	
a1) Latch without locking device and without Fastening Bracket	213-9401	
a2) Latch with locking device (concial square 9mm) and without Fastening Bracket. Special design without spring loaded link and without cam coupling	213-9403	
b) Cams (use only cams with numbers 200-06XX and 200-04XX)		01.101
c) Key hollow, Square 8	204-0103	10.18
d) Multi key	204-0701.07-07500	10.20
e) Key with concial square 9mm	701-7049	

6-1381 Flush Mounted Trap-Door Latch

Hand operable with or without tool, Low profile, Safety insert

