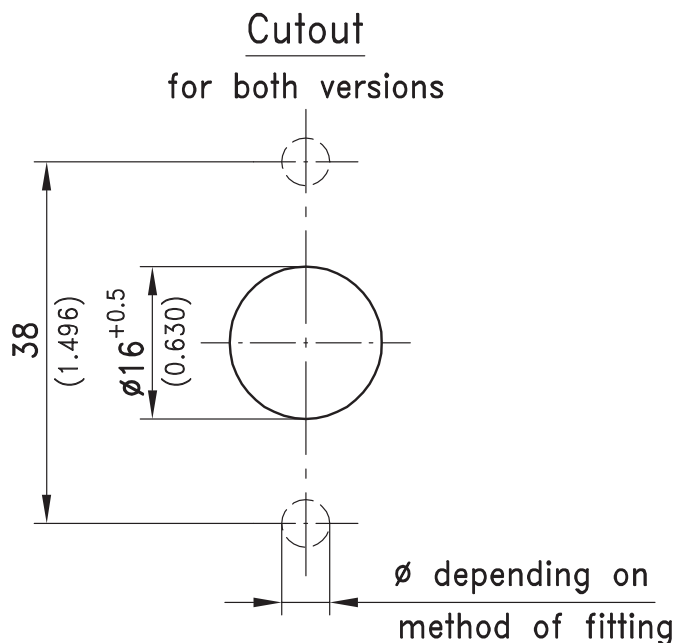


1-205 Compression Latch

Hand operable, IP65, Padlockable



| Version A cam is adjustable | | | | | See Page |
|--|---|-----------------|------------------------|--------------|----------------|
| a) | Compression Latch (Zinc Die, Black) | 200-9935 | 200-9936 | 200-9937 | 200-9938 |
| a1) | Compression Latch (Zinc Die, Zinc Plated) | 200-9939 | 200-9940 | 200-9941 | 200-9942 |
| | Door thickness | Ts max. mm/inch | 50/1.969 | 70/2.756 | 90/3.543 |
| | Frame size | H - mm | 30-60 | 50-80 | 70-100 |
| | | inch | 1.181-2.362 | 1.968-3.150 | 2.756-3.937 |
| | | L in mm / inch | | | |
| b) | Cam bent | 45/1.772 | 200-5507-45 | 200-5507-45 | 200-5507-45 |
| | Cam bent | 60/2.362 | *200-5507-60 | *200-5507-60 | *200-5507-60 |
| b1) | Cam straight | 45/1.772 | 200-5508-45 | 200-5508-45 | 200-5508-45 |
| | Cam straight | 60/2.362 | *200-5508-60 | *200-5508-60 | *200-5508-60 |
| | Cam straight | 65/2.559 | 200-5508-65 | 200-5508-65 | 200-5508-65 |
| * Price and delivery time on request | | | | | |
| Version B cam is not adjustable | | | | | |
| c) | Compression Latch (Zinc Die, Black) | 200-9916 | 200-9918 | 200-9920 | 200-9922 |
| c1) | Compression Latch (Zinc Die, Zinc Plated) | 200-9926 | 200-9928 | 200-9930 | 200-9932 |
| | Door thickness | Ts max. mm/inch | 42/1.654 | 62/2.441 | 82/3.228 |
| d) | Cam e.g. L=45mm | Part No. | Frame size - H mm/inch | | |
| | | 200-0404 | 32/1.260 | 52/2.047 | 72/2.835 |
| | | 200-0406 | 34/1.339 | 54/2.126 | 74/2.913 |
| | | 200-0408 | 36/1.417 | 56/2.205 | 76/2.992 |
| | | 200-0410 | 38/1.496 | 58/2.283 | 78/3.071 |
| | | 200-0413 | 41/1.614 | 61/2.402 | 81/3.189 |
| | | 200-0414 | 42/1.654 | 62/2.441 | 82/3.228 |
| | | 200-0416 | 44/1.732 | 64/2.520 | 84/3.307 |
| | | 200-0418 | 46/1.811 | 66/2.598 | 86/3.386 |
| | | 200-0420 | 48/1.890 | 68/2.677 | 88/3.465 |
| | | 200-0422 | 50/1.969 | 70/2.756 | 90/3.543 |
| | | 200-0424 | 52/2.047 | 72/2.835 | 92/3.622 |
| | | 200-0426 | 54/2.126 | 74/2.913 | 94/3.701 |
| Additional cams | | | | | 01.101, 01.102 |
| Order separately: | | | | | |
| Water and dust tight according to IP65 with: | | | | | |
| e) | Flat external seal | | | | 200-0902 |
| The O-ring is already installed. | | | | | |