

4-350 Hinge Pr01 180°

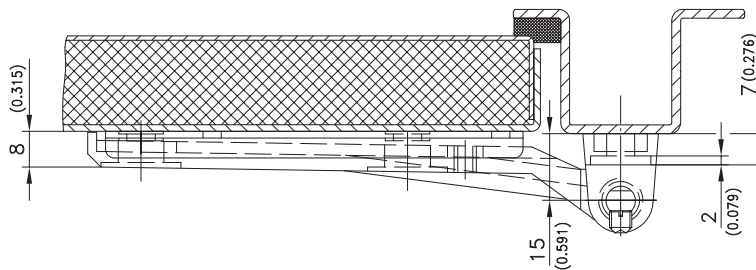
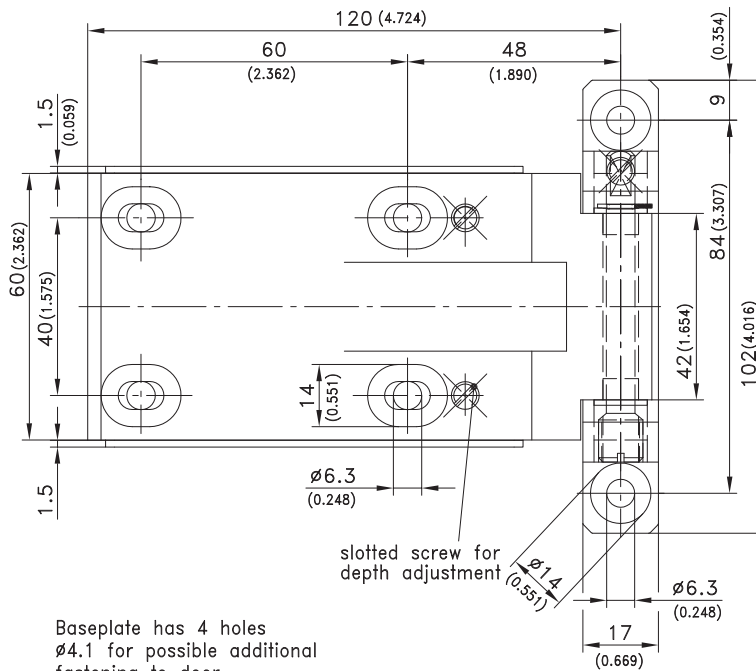
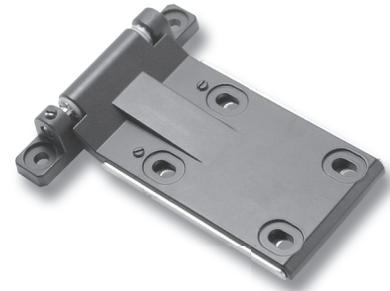


Product Notes:

- Adjustable in three dimensions
- Adjustable range:
 - Height $\pm 2\text{mm}$ (0.079)
 - Width $\pm 2\text{mm}$ (0.079)
 - Depth $\pm 2\text{mm}$ (0.079)
- Tool-less installation - see Product System 4-350SL

Material:

- Frame leaf and middle-part:** Zinc Die, Untreated (zinc colored) or Black Coated
- Base-plate:** Steel, Zinc Plated
- Bushings:** PA, Natural
- Pin:** Brass, Untreated or Stainless Steel
- Washers:** stainless steel
- Slotted screw:** Steel, Zinc Plated or Stainless Steel
- *Base plate:** Steel, Black Coated
- Adjustment screws:** Stainless Steel



Version	Untreated Surface (zinc finish)	Black Surface
3 D hinge with pin, brass, untreated		
RH version (as drawn)	217-9402	217-9405
LH version (mirror view)	217-9403	217-9406
Not assembled for RH and LH	217-9404	217-9407
3 D hinge with pin, stainless steel*		
RH version (as drawn)	217-9408	217-9411
LH version (mirror view)	217-9409	217-9412
Not assembled for RH and LH	217-9410	217-9413