

# 4-340 Hinge Pr01 180°

Nested door, PA bushing

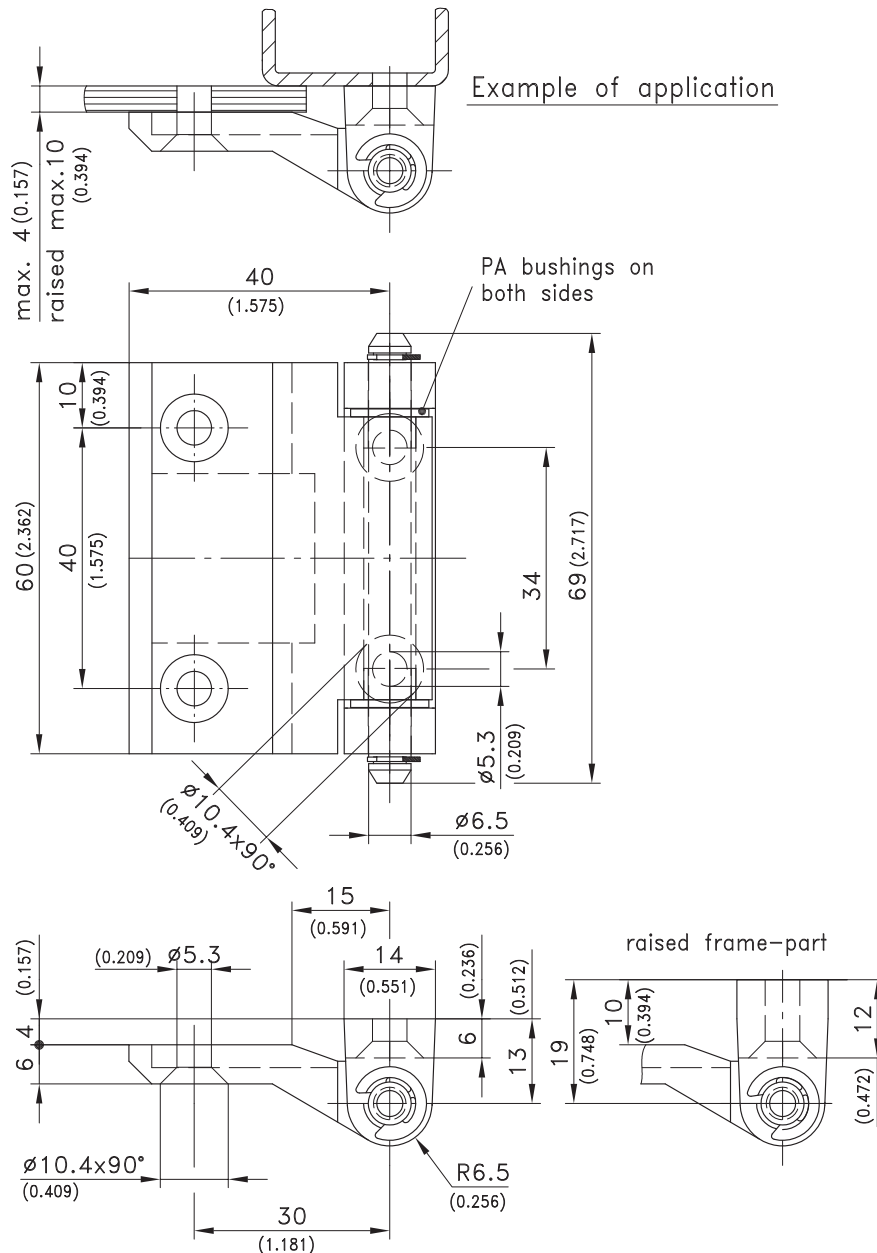


## Product Notes:

- 180° opening angle
- PA bushings
- Tool-less installation - see Product System 4-340SL

## Material:

- **Leaves:** Zinc Die, Chrome Plated or Black Coated
- **Pin:** Stainless Steel or Steel, Zinc Plated
- **Bushings:** PA, Natural



Version	Standard Frame Leaf Chrome Plated	Standard Frame Leaf Black	Raised Frame Leaf Chrome Plated	Raised Frame Leaf Black	See Page
<b>Hinge with PA bushings</b>					
Pin: Steel, Zinc Plated	217-9111	217-9105	217-9118	217-9107	
Pin: Stainless Steel	217-9112	217-9106	217-9119	217-9108	
<b>Countersunk machine screws Zinc Plated</b>					<b>10.23</b>