

# 4-271SL Hinge Pr01 SNAP-LINE 180°

One leaf tool-less installation, Nested door, Adjustable

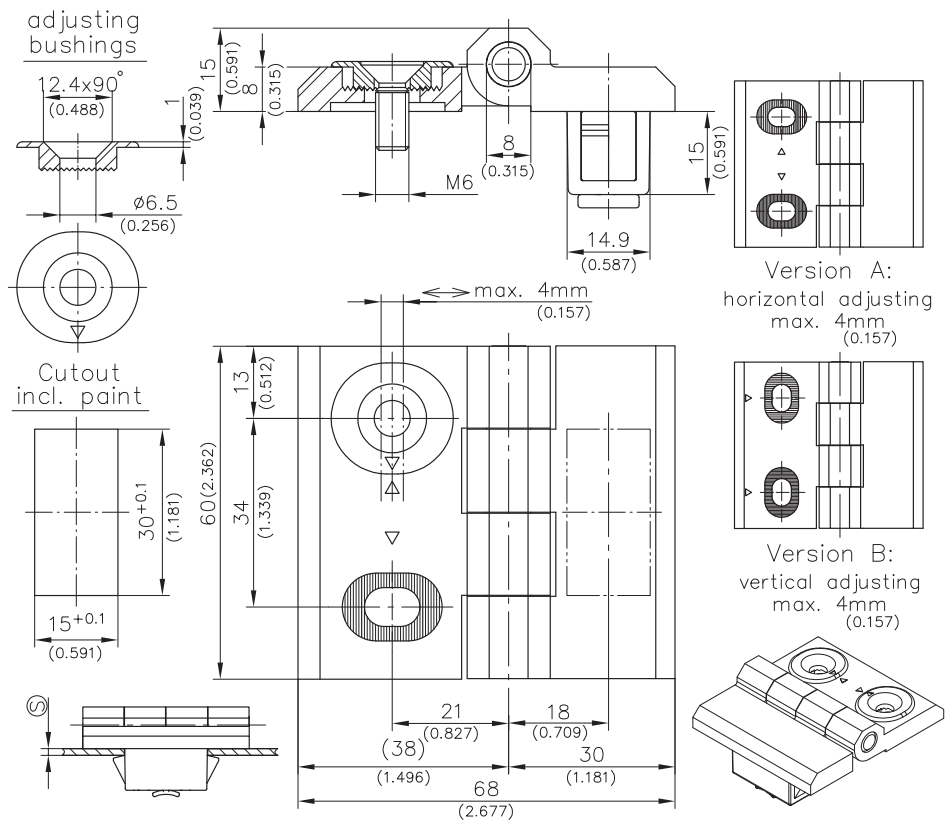


## Product Notes:

- One leaf features tool-less installation. One leaf fastens to panel with screws and is adjustable (see drawing)
- 180° opening angle
- RH and LH application
- Teeth on the bushings and oblong holes prevent hinge from slipping. Countersunk heads of the screws have full contact with the adjusting bushings
- Bushings completely cover the oblong holes preventing dust in the adjusting area
- Matching arrow tips mark the 0-position
- Screw-on - see Product System 4-271

## Material:

- **Leaves:** Zinc Die, Black
- **Adjusting bushings:** Zinc Die, Black
- **Pin:** Stainless Steel
- **Wings:** Sintered Steel



Version	Clamping Range <sup>Ⓢ</sup>	Part No.	See Page
<b>A</b>	<b>1.7 - 2.2</b>	<b>418-9206.00-00020</b>	
<b>(horizontal adjusting) (as drawn)</b>	<b>2.2 - 2.7</b>	<b>418-9206.00-00025</b>	
	<b>2.7 - 3.2</b>	<b>418-9206.00-00030</b>	
	<b>3.2 - 3.7</b>	<b>418-9206.00-00035</b>	
	<b>B</b>	<b>1.7 - 2.2</b>	<b>418-9207.00-00020</b>
<b>(vertical adjusting)</b>	<b>2.2 - 2.7</b>	<b>418-9207.00-00025</b>	
	<b>2.7 - 3.2</b>	<b>418-9207.00-00030</b>	
	<b>3.2 - 3.7</b>	<b>418-9207.00-00035</b>	
	<b>Countersunk machine screws</b>		
<b>Reinforcement plate for cutout 30x14 and 30x15mm</b>		<b>292-0701.15-01530</b>	<b>10.16</b>
<b>Tool for uninstallation</b>		<b>292-0306.80-02530</b>	<b>10.17</b>
<b>Tool for uninstallation</b>		<b>292-0301.15-00000</b>	<b>10.17</b>