

7-200 Hinge Pr01 270°

Nested door, Stainless Steel, Heavy duty

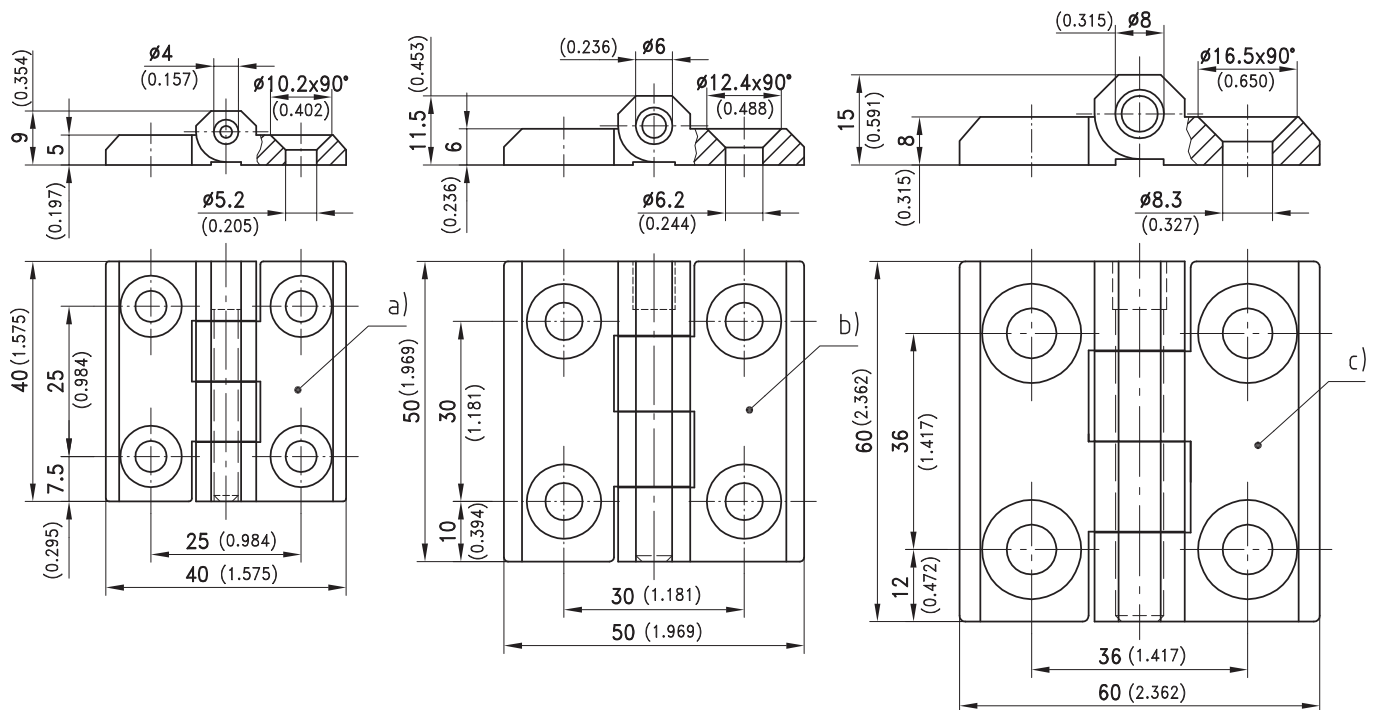


Product Notes:

- Heavy duty
- RH and LH application
- 270° opening angle
- Fasten to panel with countersunk screws M5, M6 or M8, DIN 7991
- Welded hinge pin
- Vibration resistant
- Protection against vandalism
- Zinc die - see Product System 4-270
- Tool-less installation - see Product System 4-270SL

Material:

- **Hinge parts and pin:** Stainless Steel
AISI 316, Satin Polished



Hinge	Part No.
a) 40x40x9	218-9301
b) 50x50x11.5	218-9302
c) 60x60x15	218-9303