

4-270 Hinge Pr01 270°

Nested door

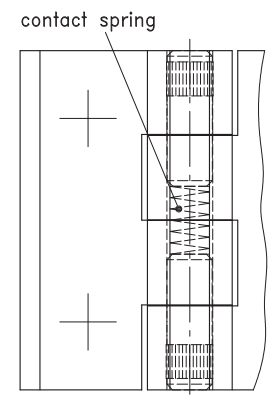
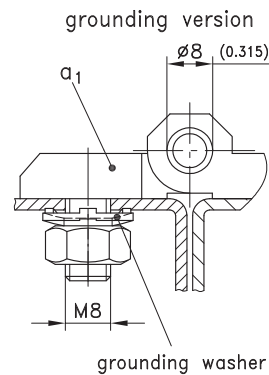
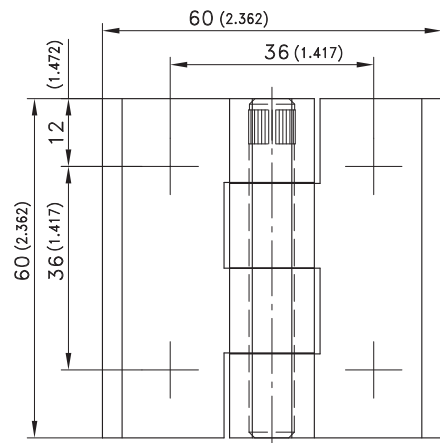
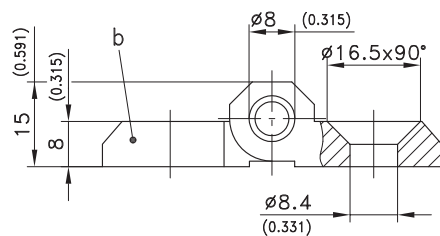
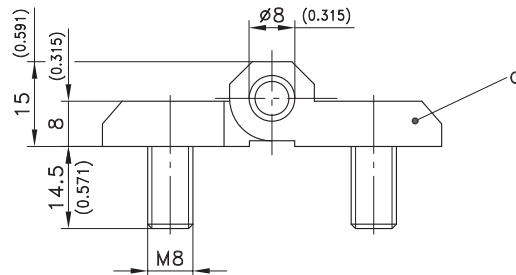


Product Notes:

- Fasten to panel with screws
- Grounding with washer
- RH or LH application
- Two opening angles - 180° or 270°
- Combination of screws and studs on request
- Tool-less installation - see Product System 4-270SL
- Stainless steel - see Product System 7-200

Material:

- **Leaves:** Zinc Die, Chrome Plated or Black Coated
- **Pivot pin and molded in screws:** Stainless Steel
- **Pin:** Steel, Zinc Plated
- **Grounding washer:** Steel, Zinc Plated
- **Spring:** Spring Steel



grounding version
limited current passage

Version	Chrome Plated	Black	See Page
a) Hinge with screws M8 molded in	218-9201	218-9202	
a1) with screws M8 molded in, grounding version	-	218-9422	
b) with countersunk holes for M8	218-9203	218-9204	
Grounding washer for a1), 4 pieces	861-0146.07-00008	861-0146.07-00008	

Version b) in stainless steel	04.65
Countersunk machine screws Zinc Plated	10.23