

4-260SL Hinge Pr01 SNAP-LINE 180°

Tool-less installation, Nested door

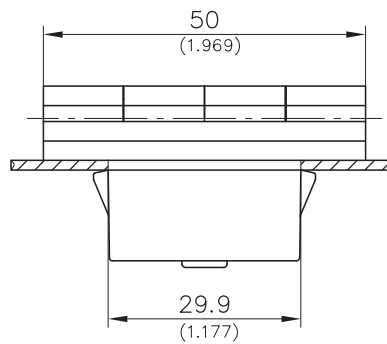
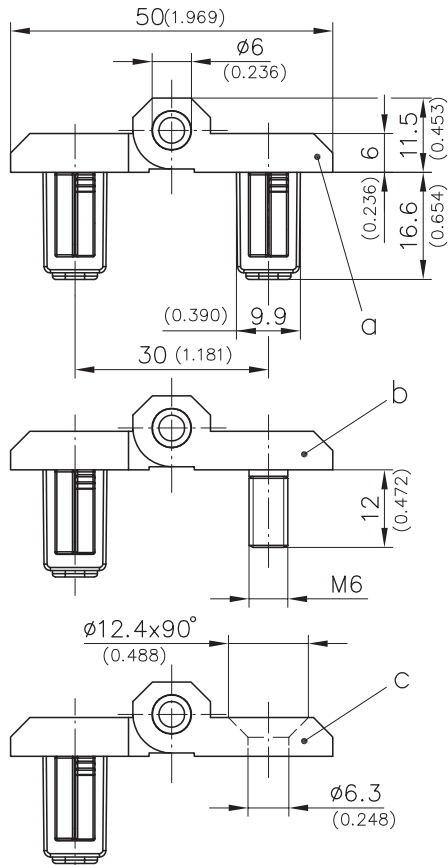
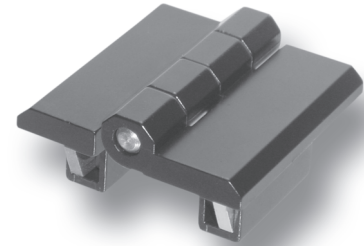


Product Notes:

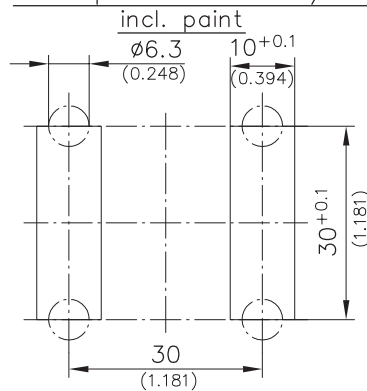
- Installed by a simple push into the cutout
- Door can be opened 180°
- Other data and dimensions - see Product System 4-260
- Screw-on - see Product System 4-260

Material:

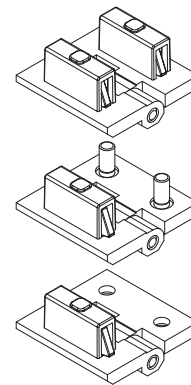
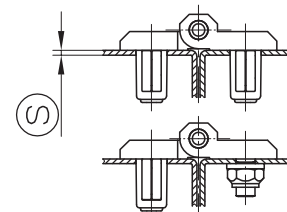
- **Leaves:** Zinc Die, Black
- **Pin:** Stainless Steel
- **Pin molded in:** Steel, Zinc Plated
- **Wings:** Sintered Metal, Coated



Hole pattern Frame/Door



Examples of application



	Clamping Range [Ⓢ]	Part No.	See Page
a) Tool-less installation - both leaves	1.2 - 1.7	418-9101.00-00015	
	1.7 - 2.2	418-9101.00-00020	
	2.2 - 2.7	418-9101.00-00025	
	2.7 - 3.2	418-9101.00-00030	
	b) Tool-less installation - one leaf	1.2 - 1.7	418-9104.00-00015
Screw-on - one leaf, M6 molded in	1.7 - 2.2	418-9104.00-00020	
	2.2 - 2.7	418-9104.00-00025	
	2.7 - 3.2	418-9104.00-00030	
	c) Tool-less installation - one leaf	1.2 - 1.7	418-9106.00-00015
Screw-on - one leaf, M6 countersunk	1.7 - 2.2	418-9106.00-00020	
	2.2 - 2.7	418-9106.00-00025	
	2.7 - 3.2	418-9106.00-00030	
	d) Countersunk machine screws		
e) Cover for cutout 30x10mm		292-0401.00-03010	10.14
f) Reinforcement plate for cutout 30x8 and 30x10mm		292-0702.15-01030	10.16
g) Tool for uninstallation		292-0306.80-02530	10.17