

4-702 Torque Hinge Pr01 270°

Nested door, Torque options - 1.22Nm and 2.01Nm

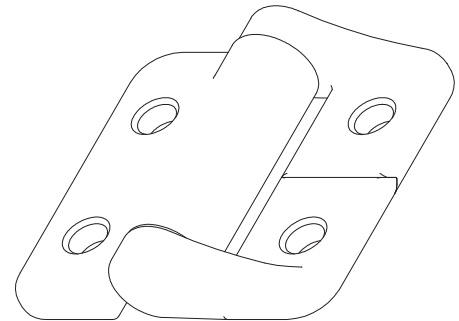
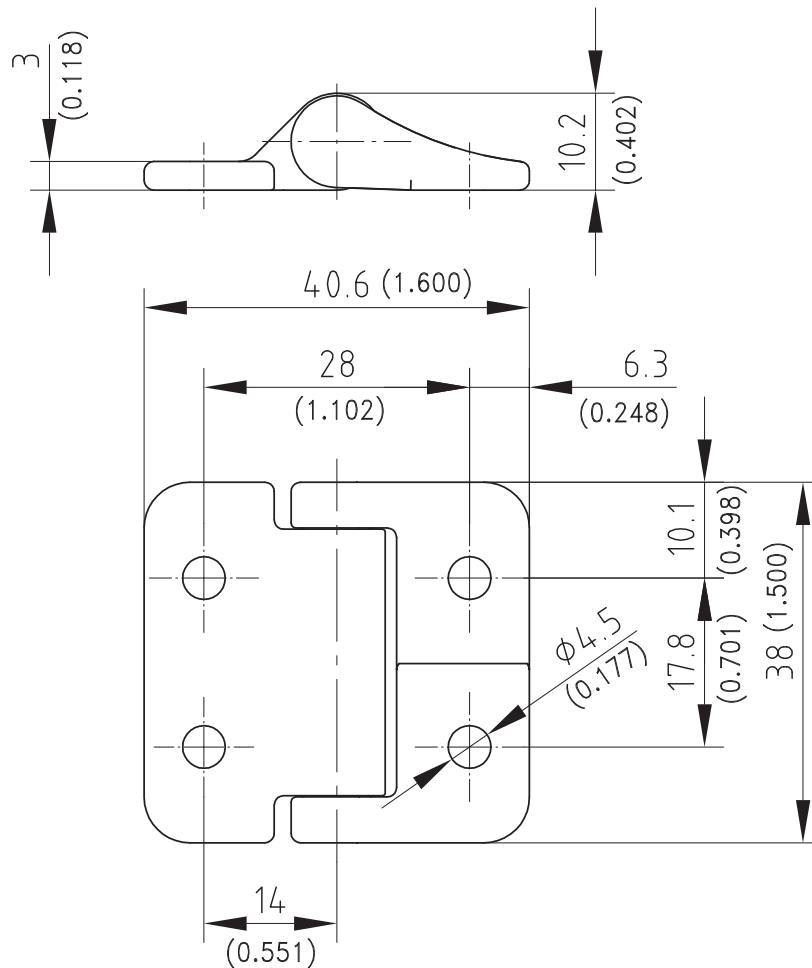


Product Notes:

- Springback typically < 1°
- Constant torque throughout full range of motion
- Life cycles > 20,000 cycles
- RH and LH application
- Doors will remain in desired position
- Fasten to panel with M4 screws
DIN-EN-ISO 4762

Material:

- **Housing:** Zinc Die, Black Coated
- **Shaft and torque clips:** Hardened Steel



Version	Nm	Part No.
Torque Hinge	1.22	703-9002.00-00120*
Torque Hinge	2.01	703-9002.00-00200*

Other Nm, surfaces and special solutions on request.

* Price and delivery time on request