

# 4-182.06SL Hinge Pr05 SNAP-LINE 180°

Frame leaf tool-less installation, Surface mounted door, IP65,  
Door bending 25mm

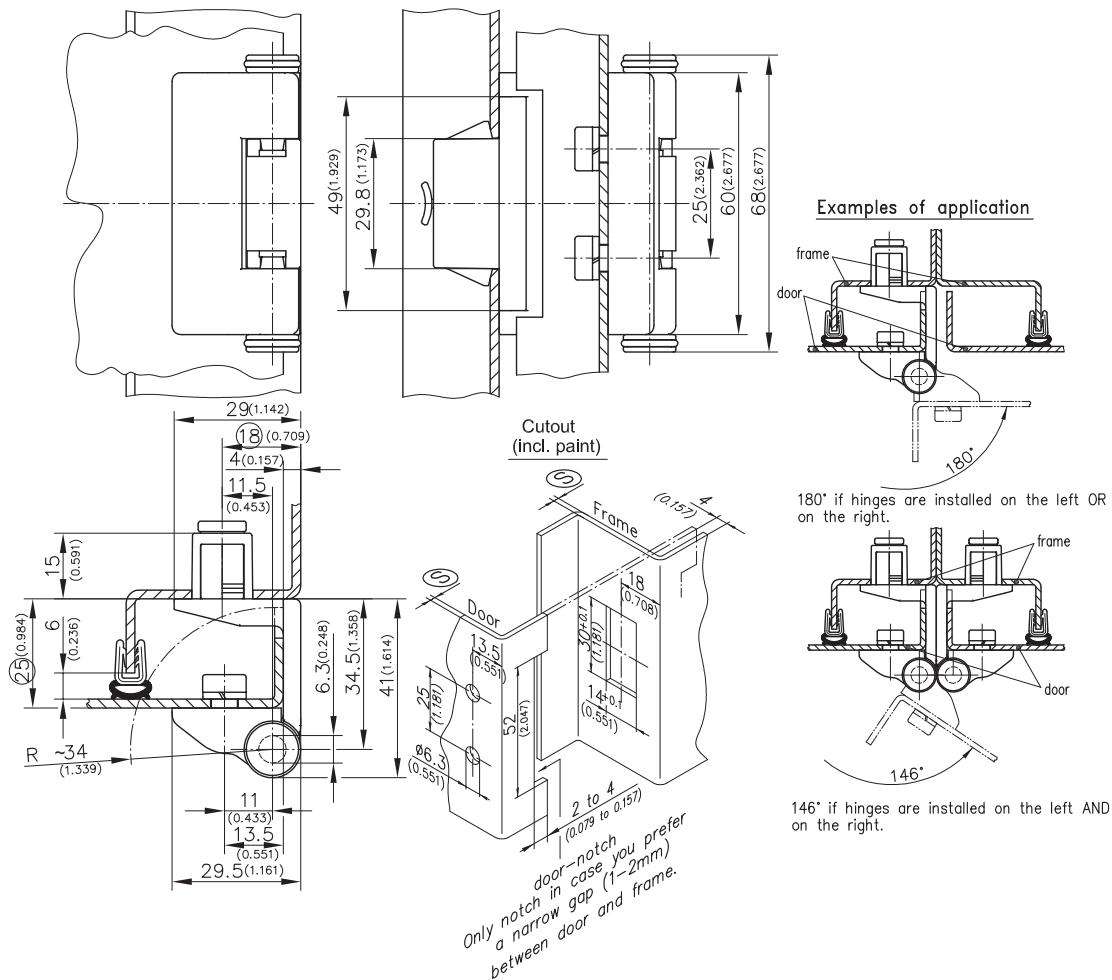
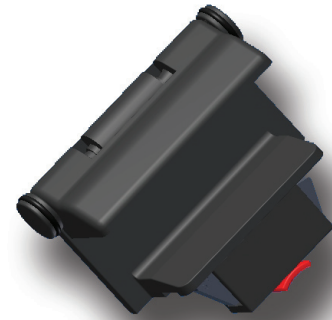


## Product Notes:

- Lift-off
- Frame leaf features tool-less installation.
- Door leaf fastens to panel with screws
- RH and LH application
- Door can be removed at 30° door opening after pulling out the captive pins
- Captive pins detents hold in position
- Water and dust tight according to IP65, DIN EN 60529 with O-rings (not included)
- Different installation method for leaves - see Product System 4-182.05 to 4-182.07SL

## Material:

- **Frame leaf, Door leaf and pin:** Zinc Die, Black
- **Wings:** Sintered Metal, Coated
- **Detent spring:** Spring Steel



Hinge	Clamping Range (S)	Part No.	See Page
	1.2 - 1.7	412-9062.00-00015	
	1.7 - 2.2	412-9062.00-00020	
	2.2 - 2.7	412-9062.00-00025	
	2.7 - 3.2	412-9062.00-00030	
	3.2 - 3.7	412-9062.00-00035	
<b>O-Ring 24x2mm</b>		200-1005.00-02420	
<b>Cover for cutout 30x14mm</b>		292-0402.00-03014	10.14
<b>Reinforcement plate for cutout 30x14 and 30x15mm</b>		292-0701.15-01530	10.16
<b>Tool for uninstallation</b>		292-0306.80-02530	10.17
<b>Tool for uninstallation</b>		292-0301.15-00000	10.17