

7-165 Concealed Hinge Pr03 120°

Surface mounted door, Stainless Steel, Heavy duty, Door bending 25mm

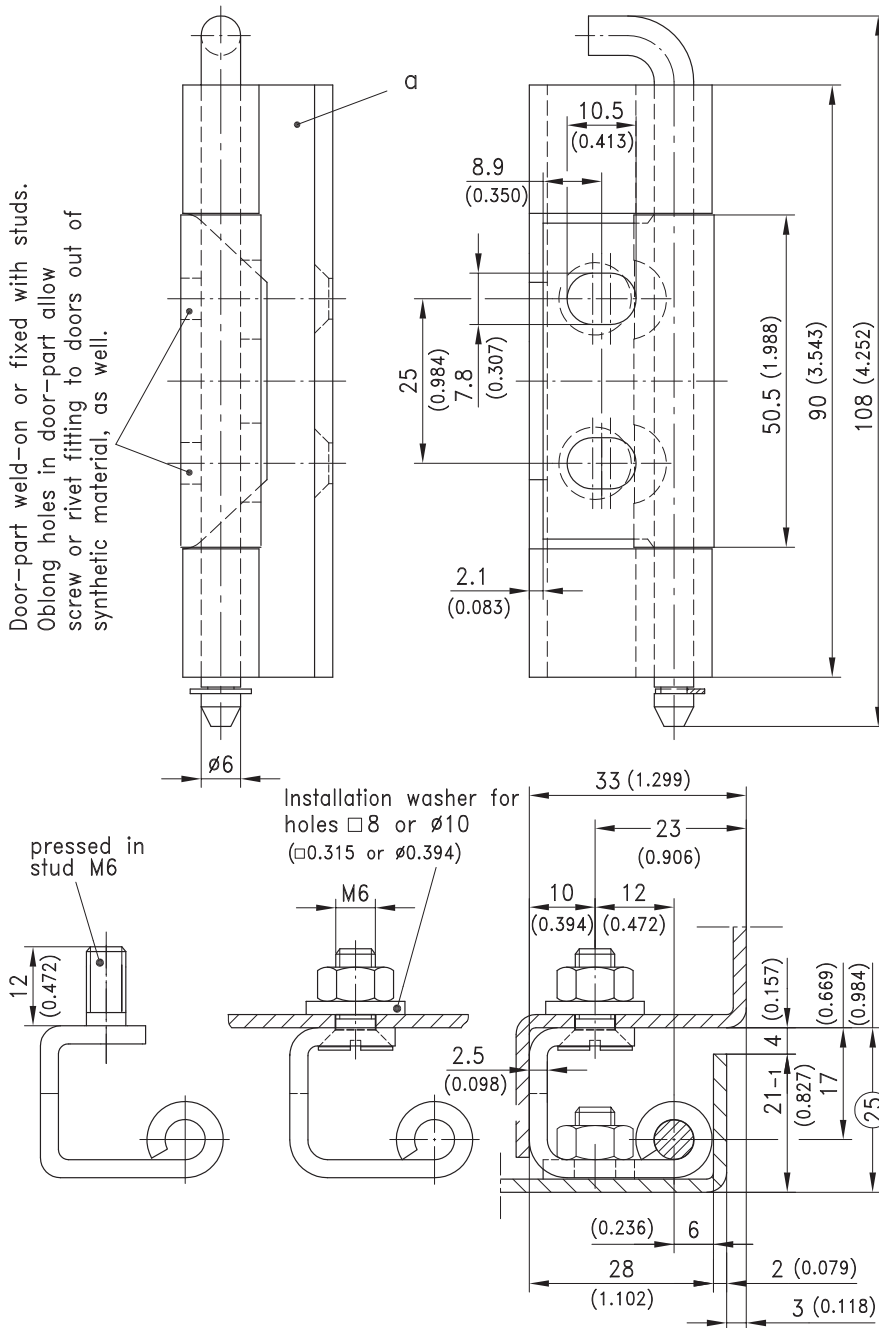


Product Notes:

- RH and LH application
- Zinc die - see Product System 4-124, 4-124SL, 4-125 and 4-125SL
- Tool-less installation- see Product System 4-124SL, 4-125SL and 7-164SL
- Other stainless steel - see Product System 7-164SL and 7-166

Material:

- **Frame leaf, door leaf, pin and installation washer: Stainless Steel AISI 304**



Version	Frame Holes	Pin Standard	Pin With Groove
a) Frame leaf with coutersunk holes for M6 screws	Ø6.3 or M6	243-9203	243-9204
a1) as a), but with installation washer	□ 8 or Ø10	243-9201	243-9202
a2) as a) and a1), but with pressed in M6 stud	Ø6.3, □8, Ø10	243-9208	243-9209