

4-122 Concealed Hinge Pr03 120°

Surface mounted door, Door bending 20mm

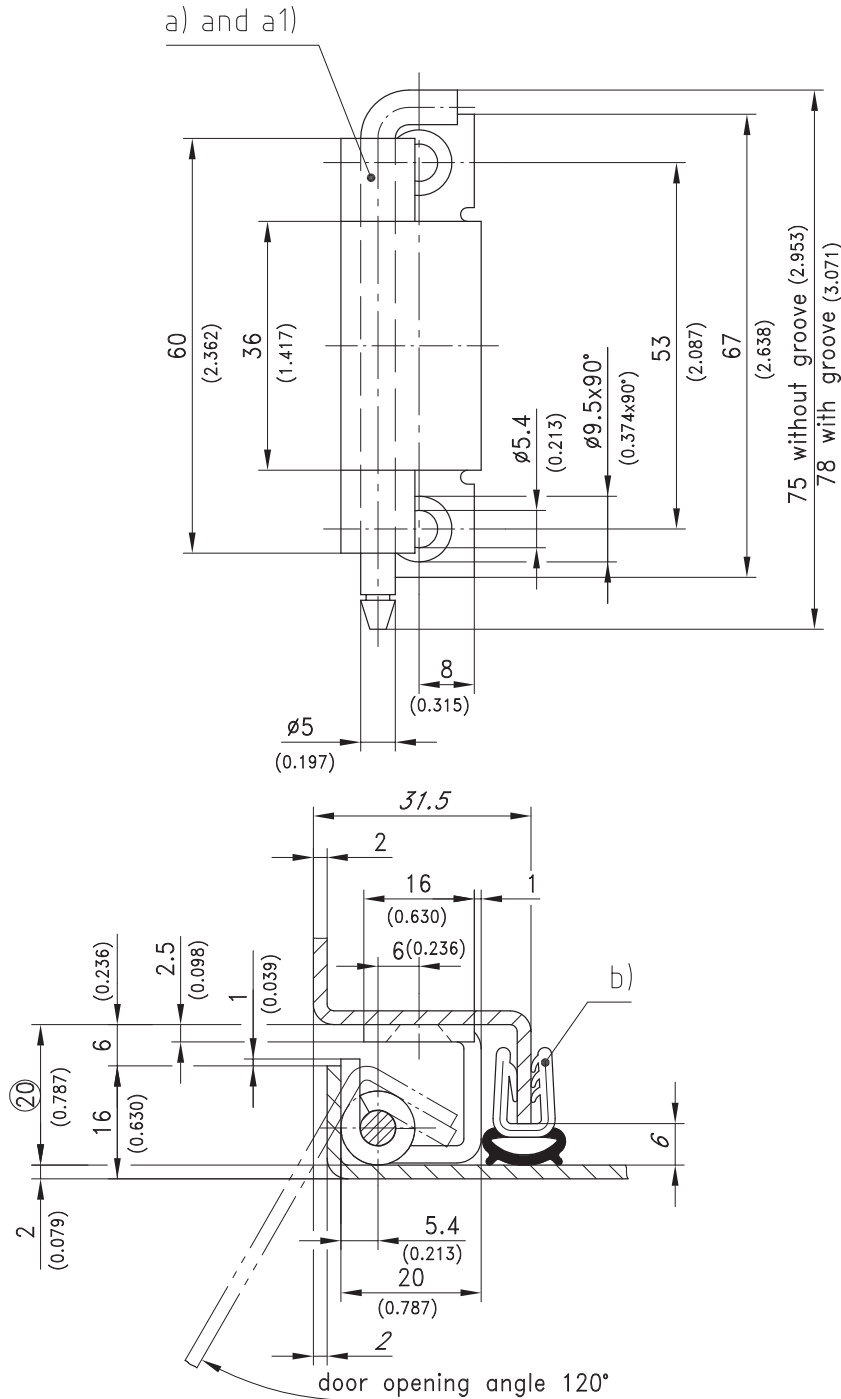


Product Notes:

- RH and LH application
- Stainless steel - see Product System 7-145

Material:

- **Frame leaf:** Steel, Zinc Plated
- **Door leaf:** Steel, Untreated
- **Pin:** Steel, Zinc Plated



120° Concealed Hinge	Part No.	See Page
a) Pin without groove	216-9005	
a1) Pin with groove (incl. c-clip)	216-9022	
Stainless steel version		04.120
b) Clip-on profile	209-0201	05.12