

4-119 Concealed Hinge Pr03 120°

Surface mounted door, Door bending 20mm

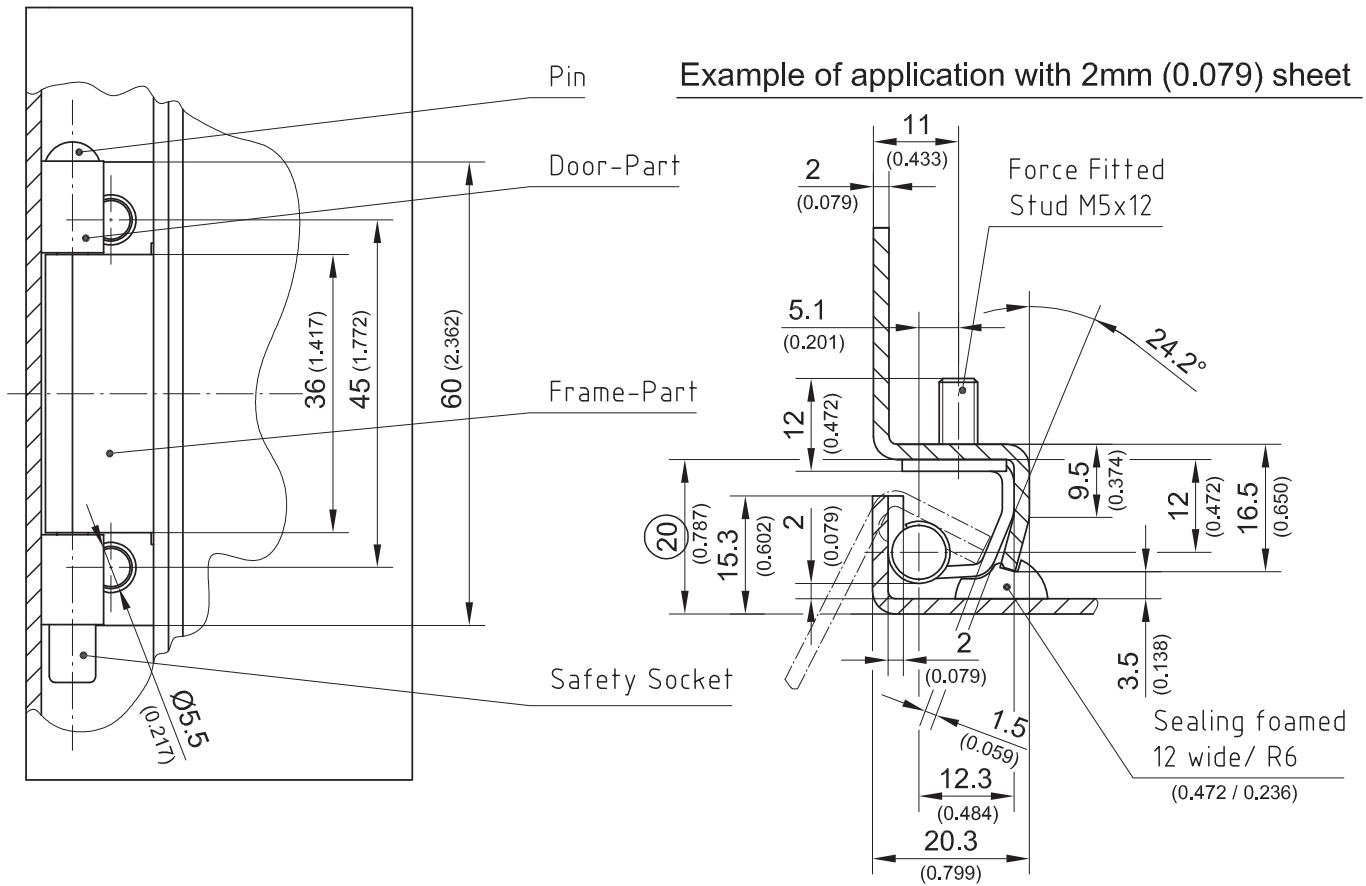


Product Notes:

- Solid design
- 120° opening angle
- RH and LH application
- Frame leaf fastens to panel with press on M5 stud.
- Door leaf fastens to panel by welding at prepared welding spots
- Pin with PE safety socket.
- **NOTE:** When 1.5mm panels are used the assembly dimension changes - drawing available on request
- Stainless steel - see Product System 7-139

Material:

- **Frame leaf:** Steel, Zinc Plated
- **Door leaf:** Steel, Untreated
- **Pin:** Stainless Steel
- **Safety socket:** PE



	Part No.	See Page
Concealed Hinge	216-9032	04.116
Stainless steel version		