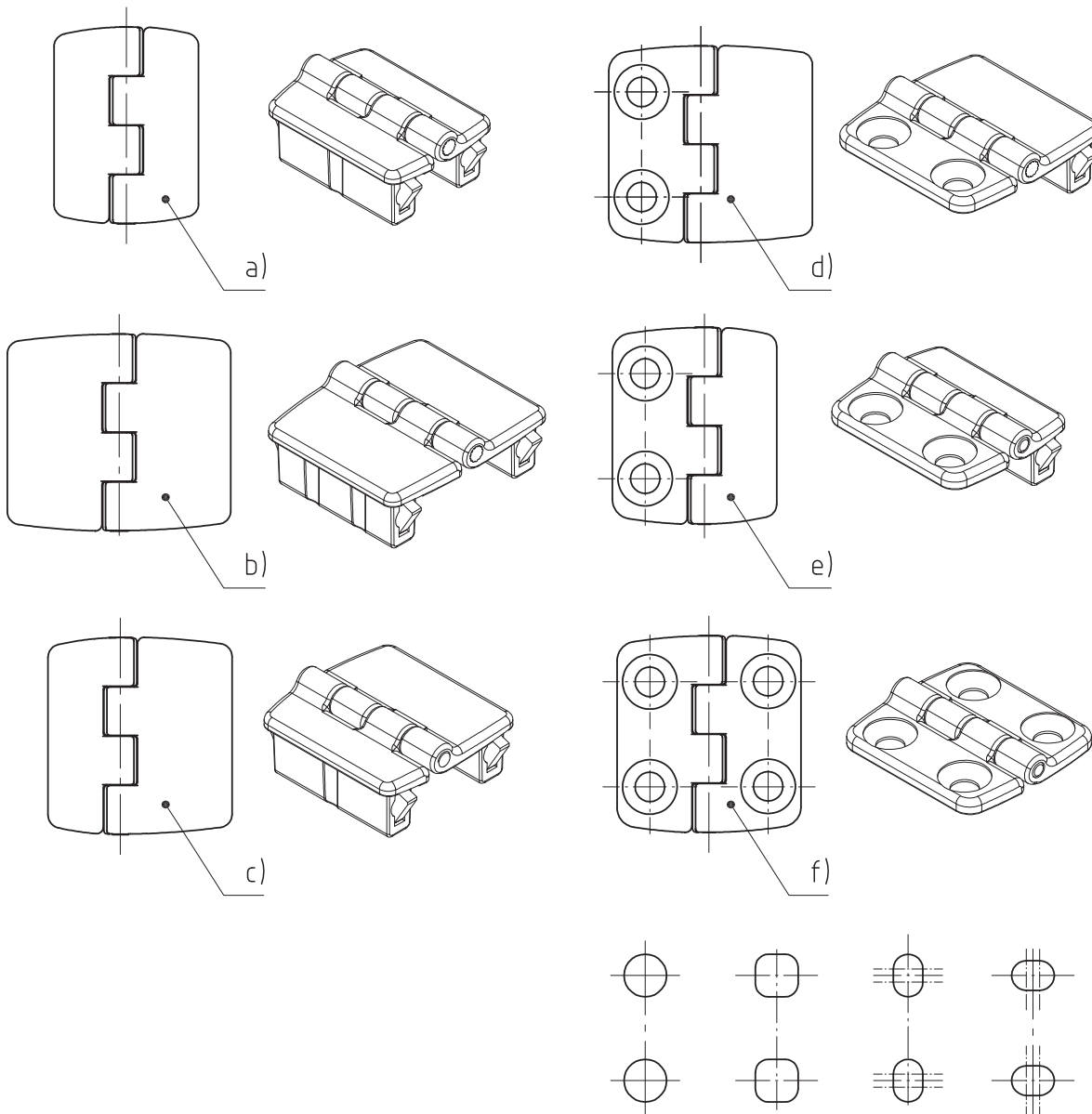


4-249SL Series Hinge Combinations SNAP-LINE 180°



Six different combinations are available.

Different Cutouts for adjustment at height and width

| | See Page |
|--|----------|
| a) 4-249.01SL Tool-less installation, Nested door, 22mm x 30mm | 04.49 |
| b) 4-249.02SL Tool-less installation, Nested door, 34mm x 30mm | 04.50 |
| c) 4-249.03SL Tool-less installation, Nested door, One leaf longer, 28mm x 30mm | 04.51 |
| d) 4-249.04SL One leaf tool-less installation, Nested door, 31mm x 30mm | 04.52 |
| e) 4-249.05SL One leaf tool-less installation, Nested door, Countersunk holes, 25mm x 30mm | 04.53 |
| f) 4-249 Nested door, 28mm x 30mm | 04.48 |

4-249.03SL Hinge Pr01 SNAP-LINE 180°

Tool-less installation, Nested door, One leaf longer

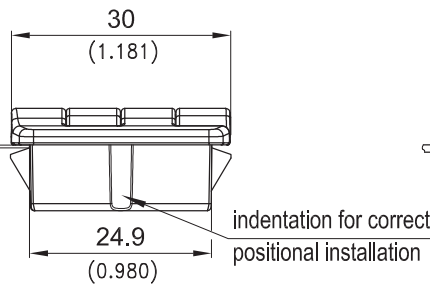
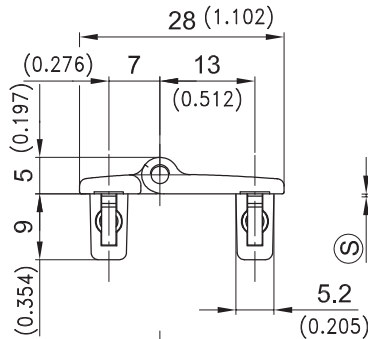


Product Notes:

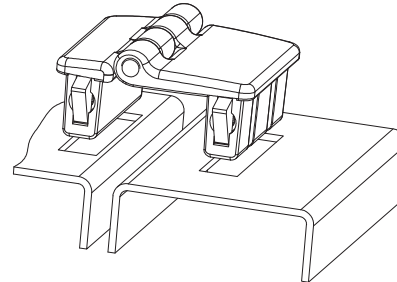
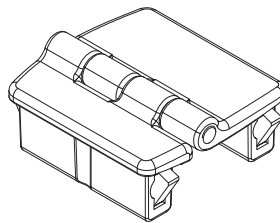
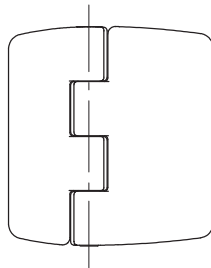
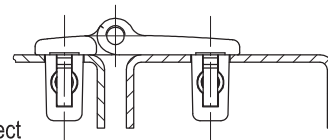
- Small hinge
- 180° opening angle
- Installed by a simple push into the cutout
- Indentations in cutout ensure proper installation on door and frame
- Different installation method for leaves - see Product System 4-249 to 4-249.05SL

Material:

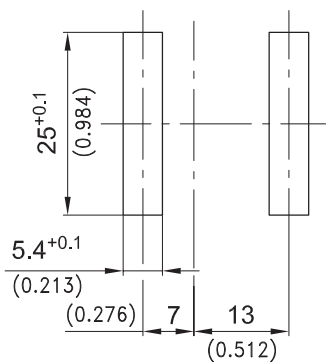
- **Leaves:** Zinc Die, Matt Chrome Plated or Matt Black
- **Pin:** Stainless Steel
- **Wings:** Sintered Steel, Zinc Plated



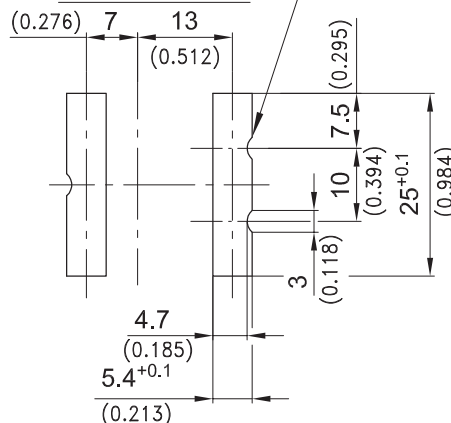
Example of application



Cutout incl. paint



alternative Cutout with fitting indication incl. paint



| | Clamping Range [Ⓢ] | Zinc Die Matt Black | Zinc Die Matt Chrome Plated | See Page |
|--|-----------------------------|------------------------|--------------------------------|----------|
| 180° Hinge | 0.6 - 0.9 | 418-9303.33-00008 | 418-9303.40-00008 | |
| | 0.8 - 1.1 | 418-9303.33-00010 | 418-9303.40-00010 | |
| | 1.2 - 1.5 | 418-9303.33-00014 | 418-9303.40-00014 | |
| | 1.8 - 2.1 | 418-9303.33-00020 | 418-9303.40-00020 | |
| | 2.2 - 2.5 | 418-9303.33-00024 | 418-9303.40-00024 | |
| Other [Ⓢ] dimensions on request | | | | |
| Tool for uninstallation | | 292-0306.80-02530 | 292-0306.80-02530 | 10.17 |