

4-246SL Hinge Pr01 SNAP-LINE 180°

Tool-less installation, Nested door, IP65, Lift-off

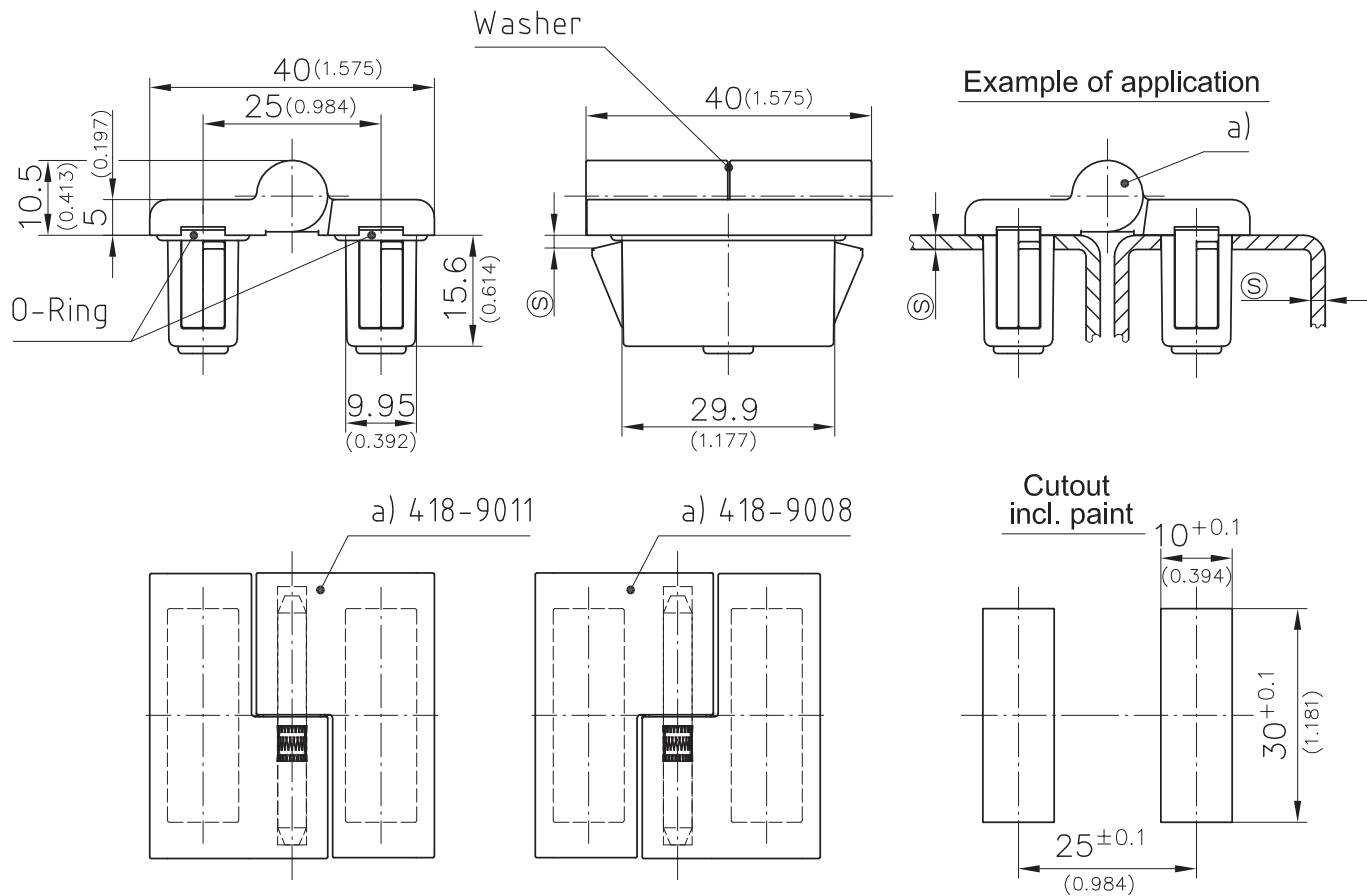


Product Notes:

- Lift-off
- Water and dust tight according to IP65, DIN EN 60529 with O-rings
- RH and LH version
- 180° opening angle
- Installed by a simple push into the cutout
- Screw-on - see Product System 4-246

Material:

- **Leaves:** Zinc Die, Black
- **Pin:** Stainless Steel
- **O-rings:** NBR
- **Wings:** Sintered Metal, Coated
- **Washer:** Stainless Steel



	Clamping Range [§]	LH	RH	See Page
a) 180° Hinge	0.7 - 1.2	418-9011.00-00010	418-9008.00-00010	
	1.2 - 1.7	418-9011.00-00015	418-9008.00-00015	
	1.7 - 2.2	418-9011.00-00020	418-9008.00-00020	
	2.2 - 2.7	418-9011.00-00025	418-9008.00-00025	
	2.7 - 3.2	418-9011.00-00030	418-9008.00-00030	

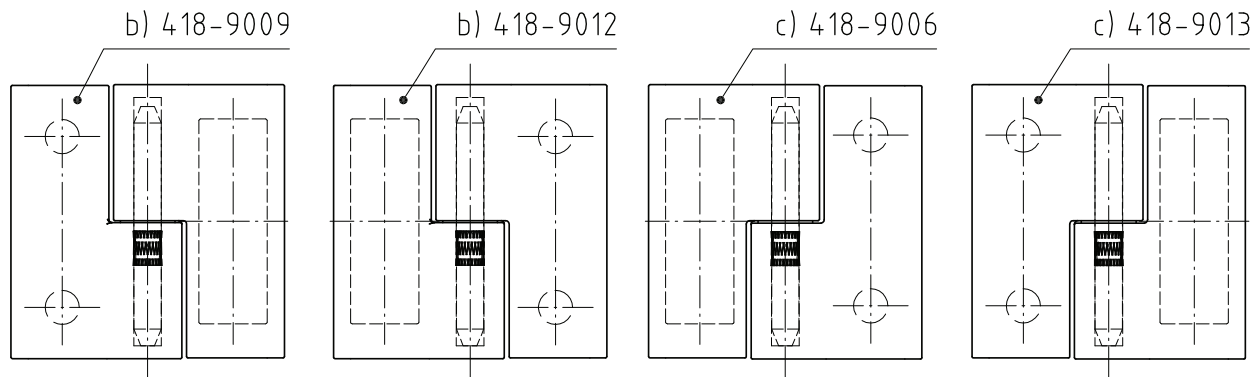
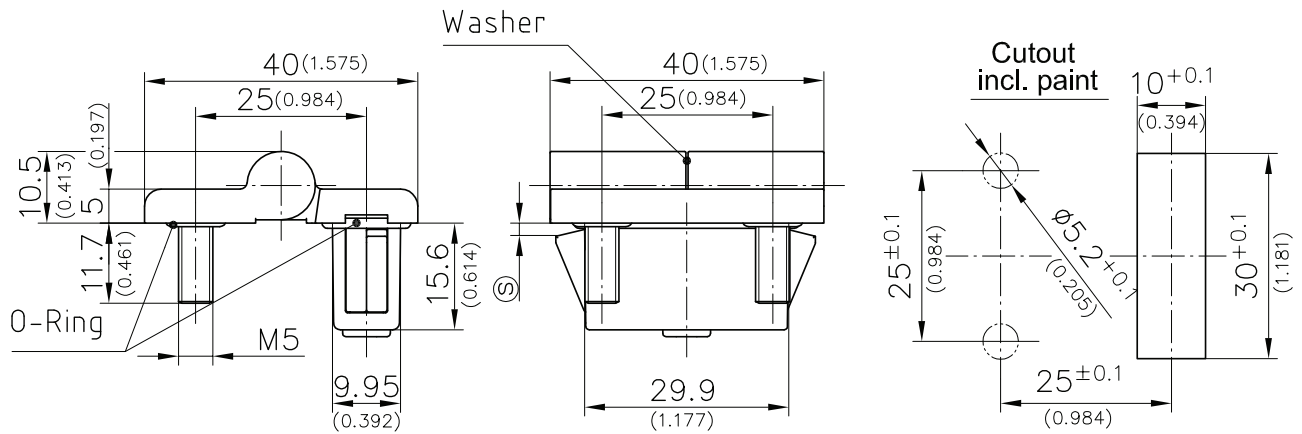
Other [§] dimensions on request

Screw-on Hinge (both leaves with countersunk screws M5 molded in)

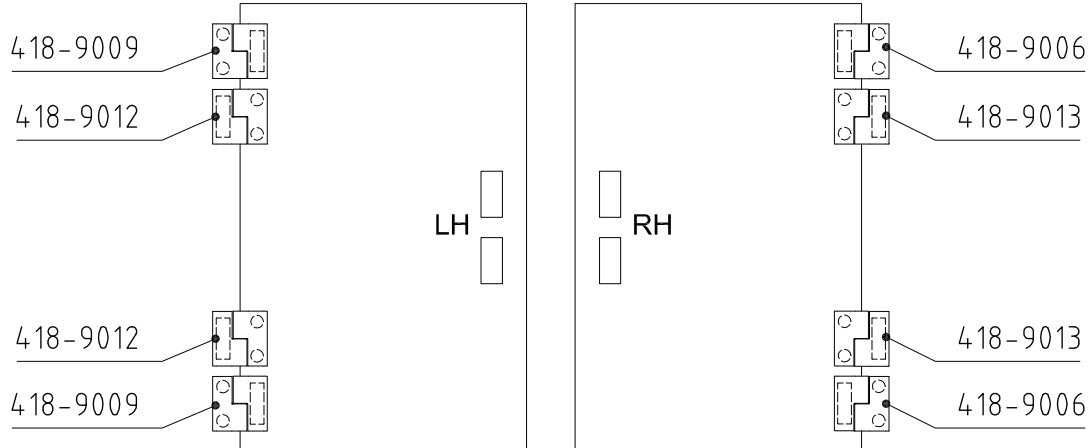
04.55

4-246SL Hinge Pr01 SNAP-LINE 180°

Tool-less installation, Nested door, IP65, Lift-off



installation situation tool-less/screw-on hinge



	Clamping Range ⑤	Pin Pressed into Screw-in Half	Pin Pressed into Tool-less Half
b) Hinge	0.7 - 1.2	418-9009.00-00010	418-9012.00-00010
RH - Tool-less installation	1.2 - 1.7	418-9009.00-00015	418-9012.00-00015
LH - screw-on	1.7 - 2.2	418-9009.00-00020	418-9012.00-00020
Screws M5 molded in	2.2 - 2.7	418-9009.00-00025	418-9012.00-00025
	2.7 - 3.2	418-9009.00-00030	418-9012.00-00030
c) Hinge	0.7 - 1.2	418-9006.00-00010	418-9013.00-00010
LH - Tool-less installation	1.2 - 1.7	418-9006.00-00015	418-9013.00-00015
RH - screw-on	1.7 - 2.2	418-9006.00-00020	418-9013.00-00020
Screws M5 molded in	2.2 - 2.7	418-9006.00-00025	418-9013.00-00025
	2.7 - 3.2	418-9006.00-00030	418-9013.00-00030