

4-124SL Concealed Hinge Pr03 SNAP-LINE 130°

Frame leaf tool-less installation, Surface mounted door, IP65, Lift-off,
Door bending 25mm

IP 65



130°

DIRAK
RoHS / WEEE
compliant



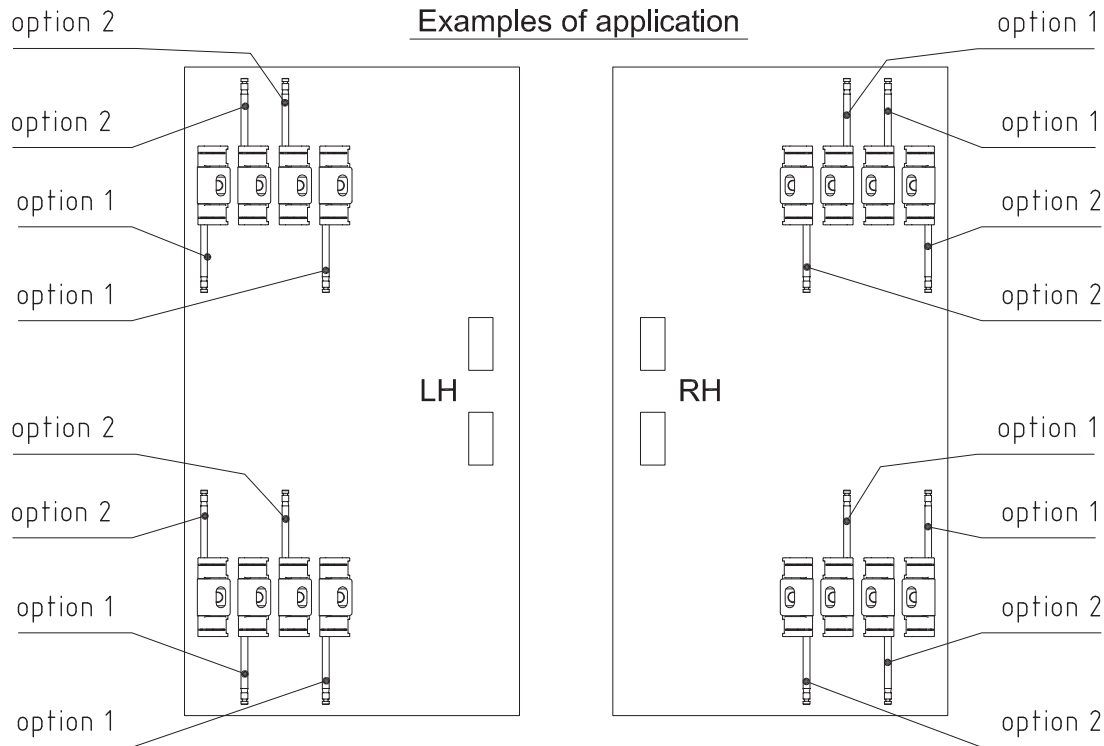
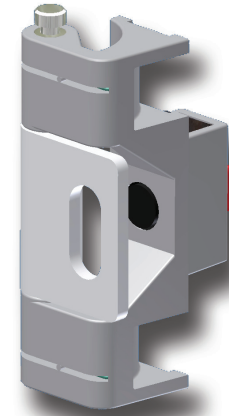
Product Notes:

- 130° opening angle
- RH and LH application
- By pulling the pin the door leaf is released for door removal
- The pin is captive in frame leaf
- Options allow for a pin to be pre-assembled in top or bottom
- Installed by a simple push into the cutout
- Water and dust tight according to IP65, DIN EN 60529 with O-rings
- Oblong hole in the door leaf allows ±5mm vertical adjustment
- For similar product with additional door lift-off feature - see Product System 4-125SL.

- Other zinc die - see Product System 4-124, 4-125 and 4-125SL
- Screw-on - see Product System 4-124, 4-125, 7-165 and 7-166
- Stainless steel - see Product System 7-164SL, 7-165, 7-166

Material:

- **Frame leaf:** Zinc Die, Untreated
- **Door leaf:** Steel, Zinc Plated
- **Pin:** Steel, Zinc Plated
- **Wings:** Sintered Metal, Coated
- **O-Ring:** NBR



Depending on the shown options, the captive pin is pre-assembled from the top or upside-down. The chart below shows the options for LH and RH doors.

	Clamping Range (S)	Option 1 LH, Bottom Pin RH, Top Pin	Option 2 LH, Top Pin RH, Bottom Pin	See Page
Concealed Hinge	1.2 - 1.7	443-9001.00-20015	443-9001.00-10015	
	1.7 - 2.2	443-9001.00-20020	443-9001.00-10020	
	2.2 - 2.7	443-9001.00-20025	443-9001.00-10025	
	2.7 - 3.2	443-9001.00-20030	443-9001.00-10030	
	3.0 - 3.5	443-9001.00-20033	443-9001.00-10033	
Cover for cutout 30x14mm		292-0402.00-03014	292-0402.00-03014	10.14
Reinforcement plate for cutout 30x14 and 30x15mm		292-0701.15-01530	292-0701.15-01530	10.16
Tool for uninstallation		292-0306.80-02530	292-0306.80-02530	10.17
Tool for uninstallation		292-0301.15-00000	292-0301.15-00000	10.17

4-124SL Concealed Hinge Pr03 SNAP-LINE 130°

Frame leaf tool-less installation, Surface mounted door, IP65, Lift-off, Door bending 25mm

