

6-1108 Bridge Handle

Surface mount, Rear installation

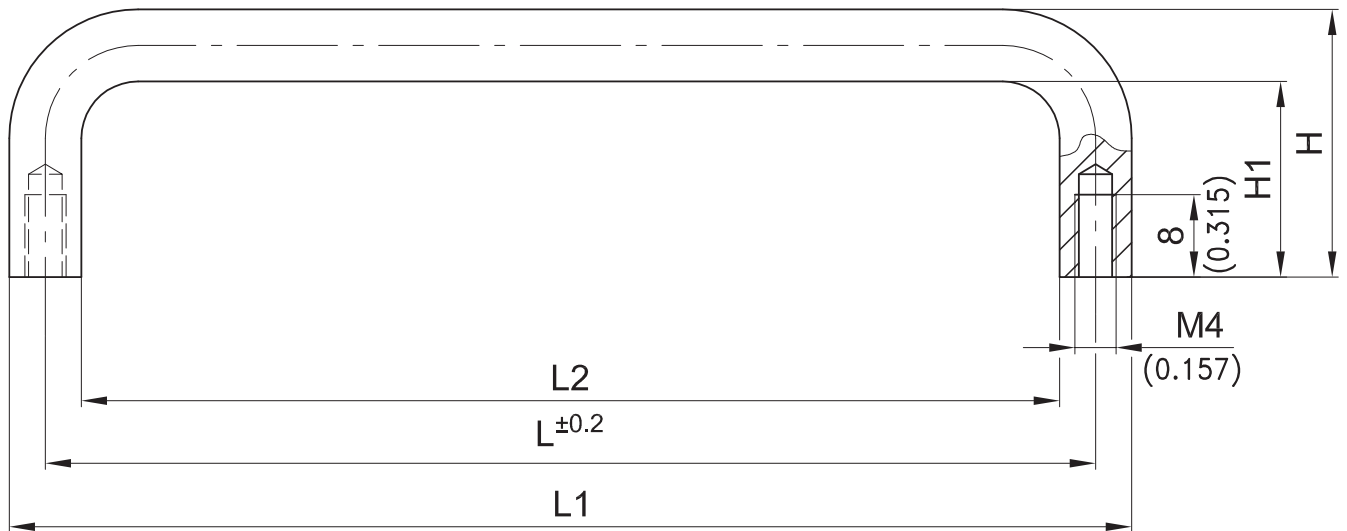
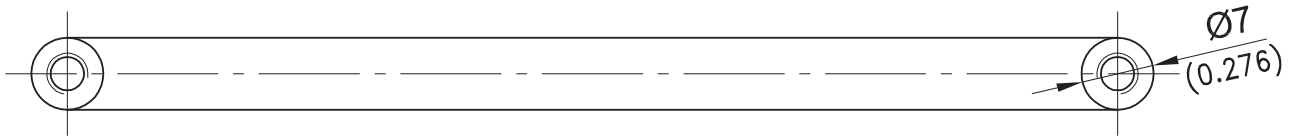


Product Notes:

- Solid aluminium handle
- Vertical and horizontal application
- Fasten to panel with M4 screws
- Finger pull handle of same design - see Product System 6-1109

Material:

- Aluminium, Anodized Natural (Silver)
- Other surfaces on request**



Bridge Handle	L	L1	L2	H	H1	Aluminium Anodized
mm/inch	96/3.780	103/4.055	89/3.054	26/1.024	19/0.748	213-0512.96-00096
	128/5.039	135/5.315	121/4.764	26/1.024	19/0.748	213-0512.96-00128