

6-1104 Bridge Handle

Surface mount, Rear installation

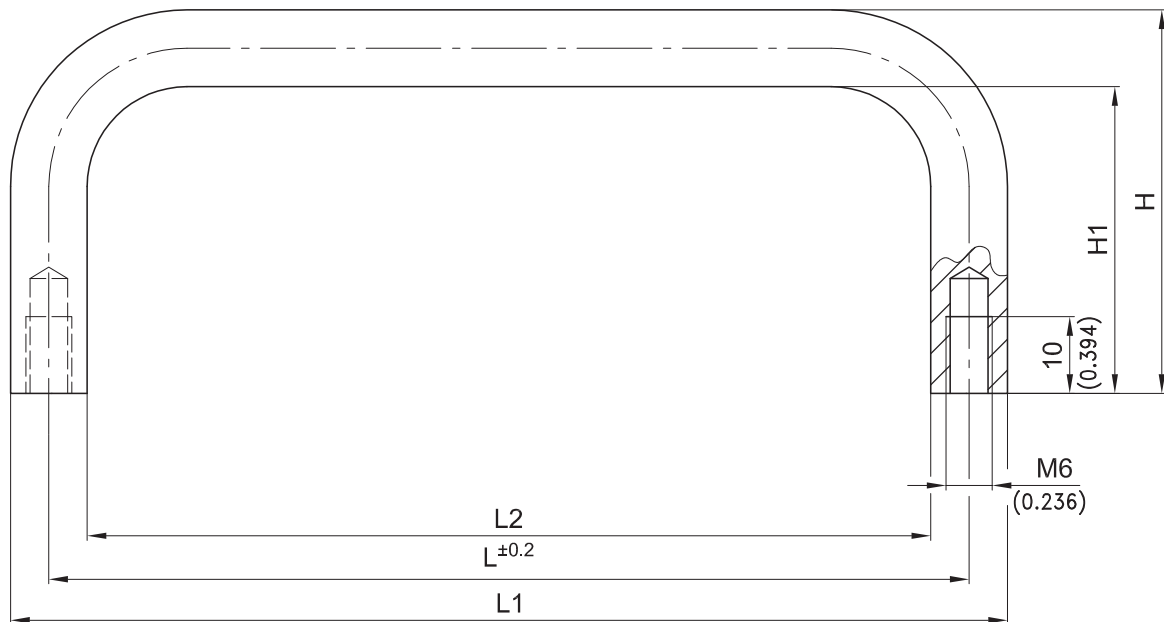
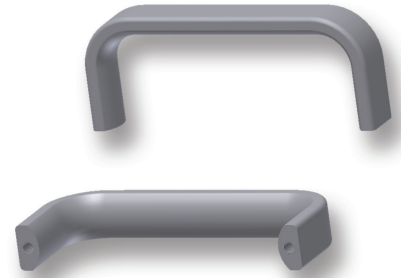


Product Notes:

- Smooth surface
- Solid aluminium handle
- Vertical and horizontal application
- Fasten to panel with M6 screws

Material:

- Aluminium, Anodized Natural (Silver)
- **Other surfaces on request**



Machine Handle, half round	L	L1	L2	H	H1	Aluminium Anodized
mm/inch	112/4.409	122/4.803	102/4.016	50/1.969	40/1.575	213-0513.96-00112
	128/5.039	138/5.433	118/4.646	50/1.969	40/1.575	213-0513.96-00128
	160/6.299	170/6.693	150/5.906	50/1.969	40/1.575	213-0513.96-00160