

6-1109 Finger Pull Handle

Surface mount, Rear installation

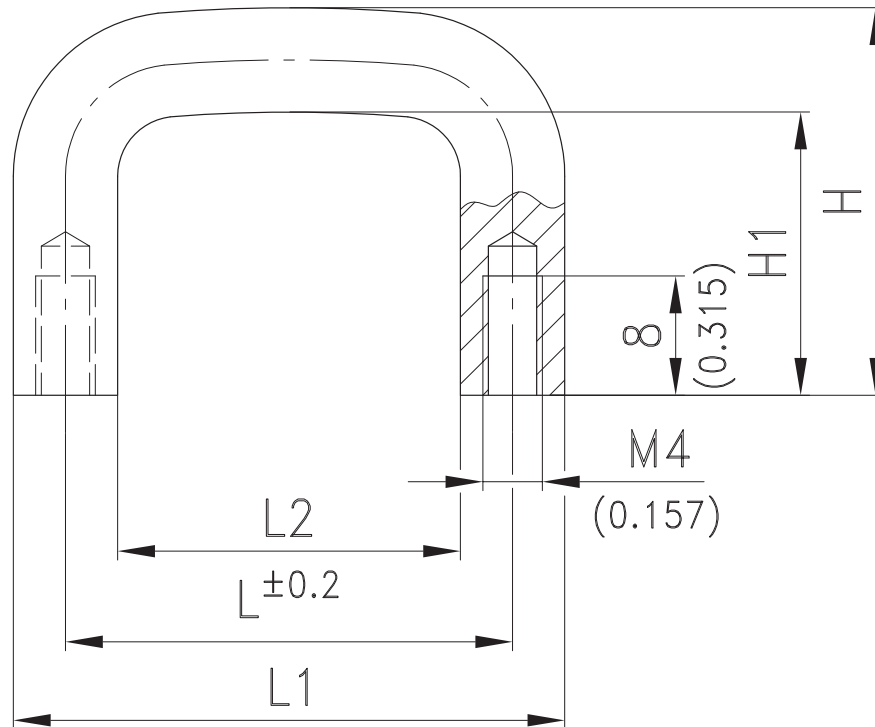
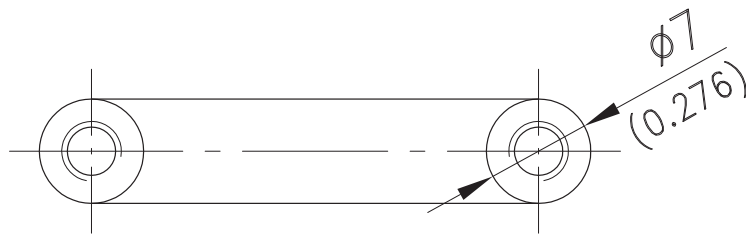


Product Notes:

- Solid aluminium handle
- Vertical and horizontal application
- Fasten to panel with M4 screws
- Bridge handle of same design - see Product System 6-1108

Material:

- Aluminium, Anodized Natural (Silver)
- Other surfaces on request**



Bridge Handle	L	L1	L2	H	H1	Aluminium Anodized
mm/inch	30/1.181	37/1.457	23/0.906	26/1.036	19/0.748	213-0511.96-00030
	64/2.520	71/2.795	57/2.244	26/1.036	19/0.748	213-0511.96-00064