

1-041.02SL Captive Fastener 12.7 SNAP-LINE

Tool-less installation, Tool removeable from front, Captive in front panel, Machinery safety compliant

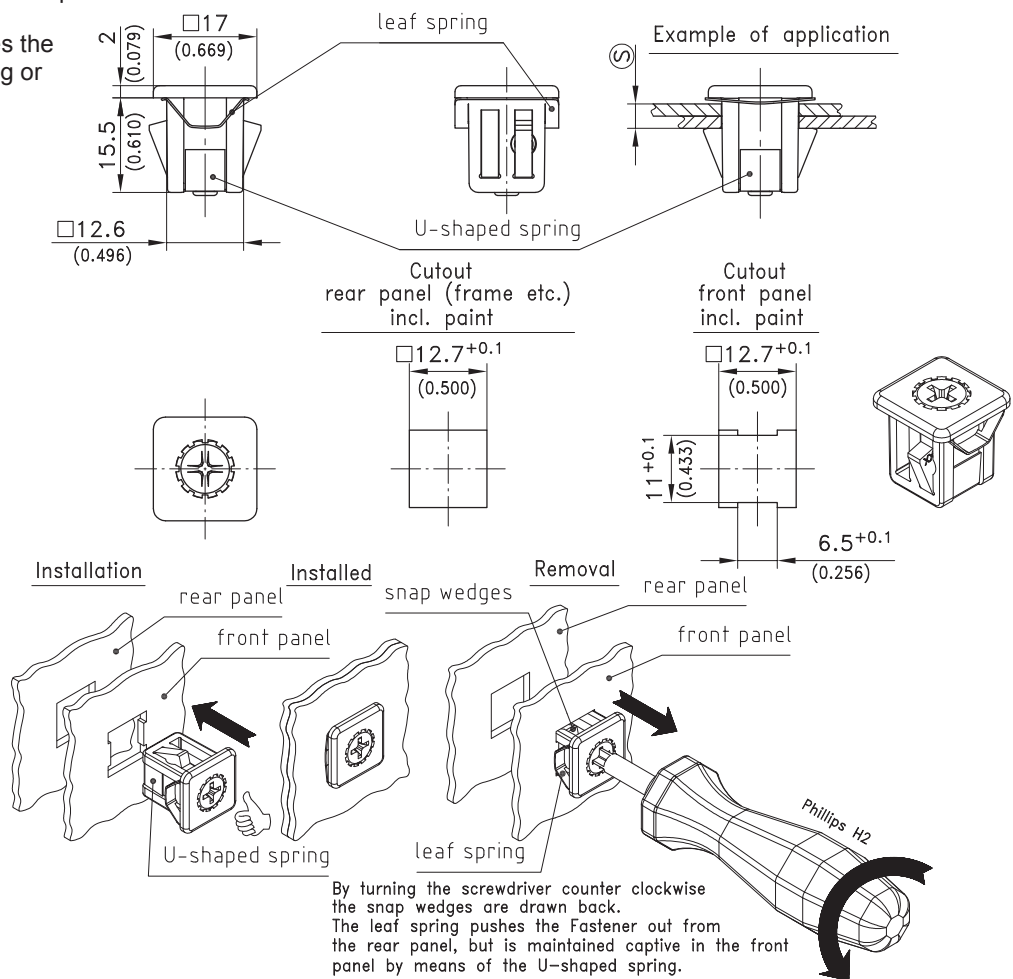
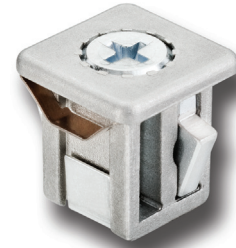


Product Notes:

- Fastener for joining flat metal panels
- Join two metal panels by pushing the fastener through the cutouts
- The front panel can be removed from the rear panel using a Phillips H2 screwdriver. Turn the Phillips head insert 1/4 turn to release from rear panel
- The dimension \textcircled{S} is the total thickness of both panels
- Leaf spring under head pushes fastener from front panel when fastener is disengaged
- **Machinery Directive 2006/42EC:**
To meet the Machinery Directive 2006/42EC the captive fastener is held in front panel by the U-shaped spring
- Captive fastener eliminates the concern of losing, dropping or misplacing hardware

Material:

- **Housing:** Zinc Die, Untreated
- **Wings:** Sintered Steel
- **Insert:** Steel, Zinc Plated
- **U-shaped spring:** Spring Steel
- **Leaf spring:** Stainless Steel



	Clamping Range \textcircled{S}	Part No.
Captive Fastener	1.4 - 1.9	294-9103.00-00021
	2.4 - 2.9	294-9103.00-00031
	2.9 - 3.4	294-9103.00-00036
	3.4 - 3.9	294-9103.00-00041
	3.9 - 4.4	294-9103.00-00046
	4.9 - 5.4	294-9103.00-00056
	5.9 - 6.4	294-9103.00-00066
Other \textcircled{S} - dimensions on request		