

1-034SL Captive Fastener 9.5 SNAP-LINE



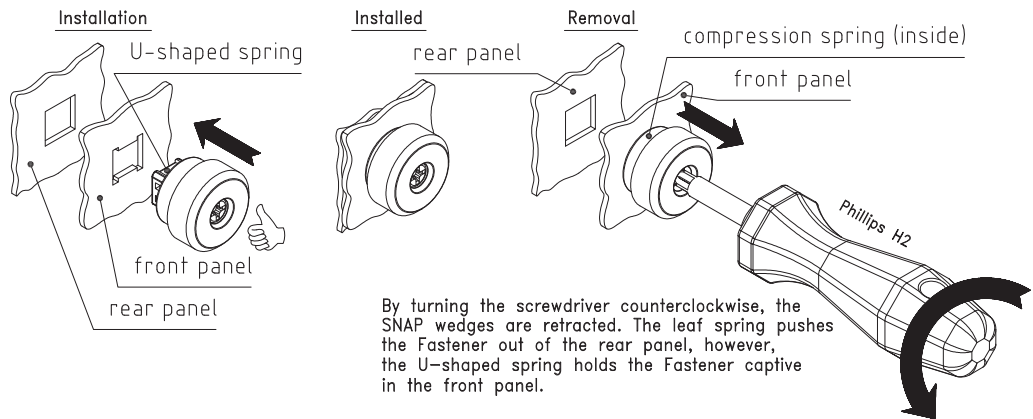
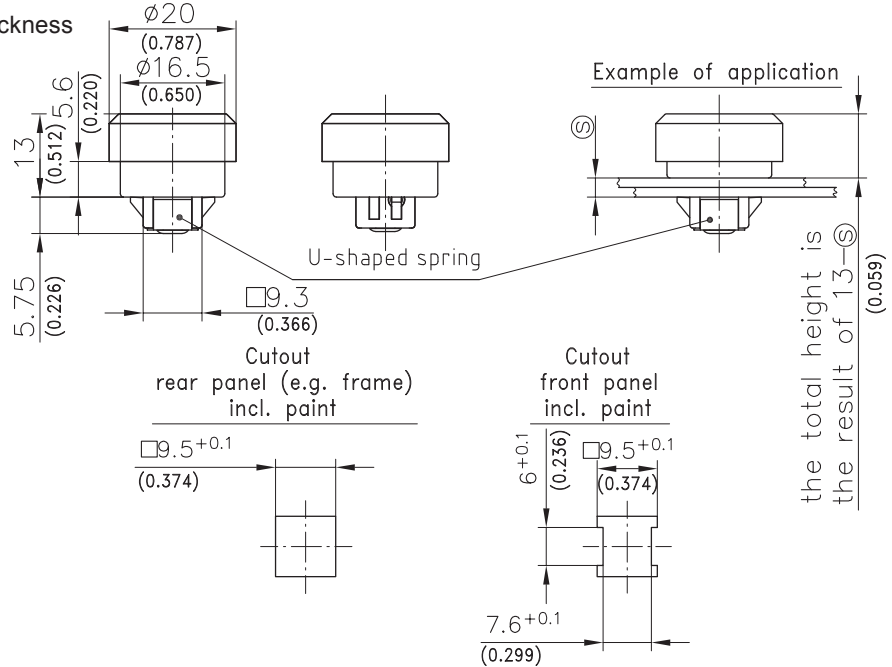
Tool-less installation, Tool removeable from front, Captive in front panel, Wide range of panel thicknesses, Pop-up when disengaged, Machinery safety compliant

Product Notes:

- **Machinery Directive 2006/42EC:**
To meet the Machinery Directive 2006/42EC the captive fastener is held in front panel by the U-shaped spring
- Vibration resistant under extreme conditions
- Fastener is disengaged from front with Phillips H2 screwdriver.
Leaf spring under head pushes fastener from front panel when fastener is disengaged
- Internal spring results in fastener being self-adjusting for thickness between 0.5mm and 5.5mm (0.020-0.217)
- Join two metal panels by pushing the fastener through the cutouts
- Captive fastener eliminates the concern of losing, dropping or misplacing hardware
- The dimension \textcircled{S} is the total thickness of both panels

Material:

- **Housing and washer:** Zinc Die, Chrome Plated
- **Insert:** Aluminium, Hardened
- **Compression spring and U-shaped spring:** Stainless Steel
- **Wings:** Sintered Steel



By turning the screwdriver counterclockwise, the SNAP wedges are retracted. The leaf spring pushes the Fastener out of the rear panel, however, the U-shaped spring holds the Fastener captive in the front panel.

Captive Fastener	Clamping Range \textcircled{S}	Part No.
	0.5 - 5.5	294-9302.00-00055