

6-043 Screw Assembly for Terminal Box Cover

Front installaiton, IP66

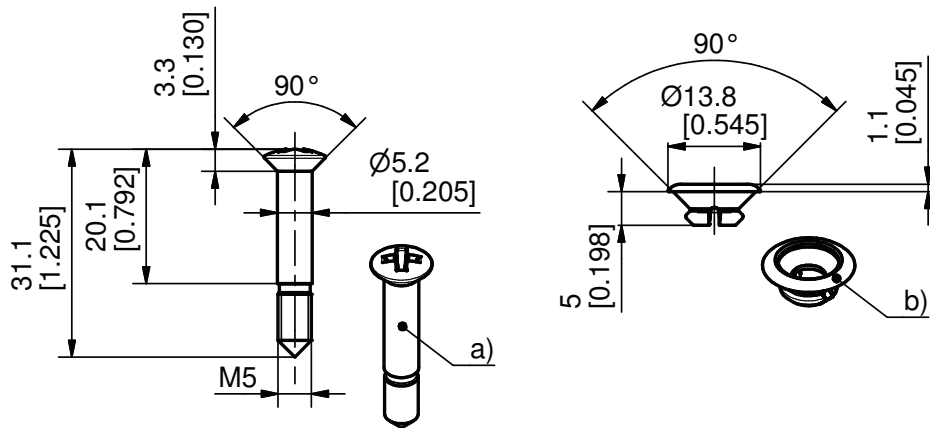


Product Notes:

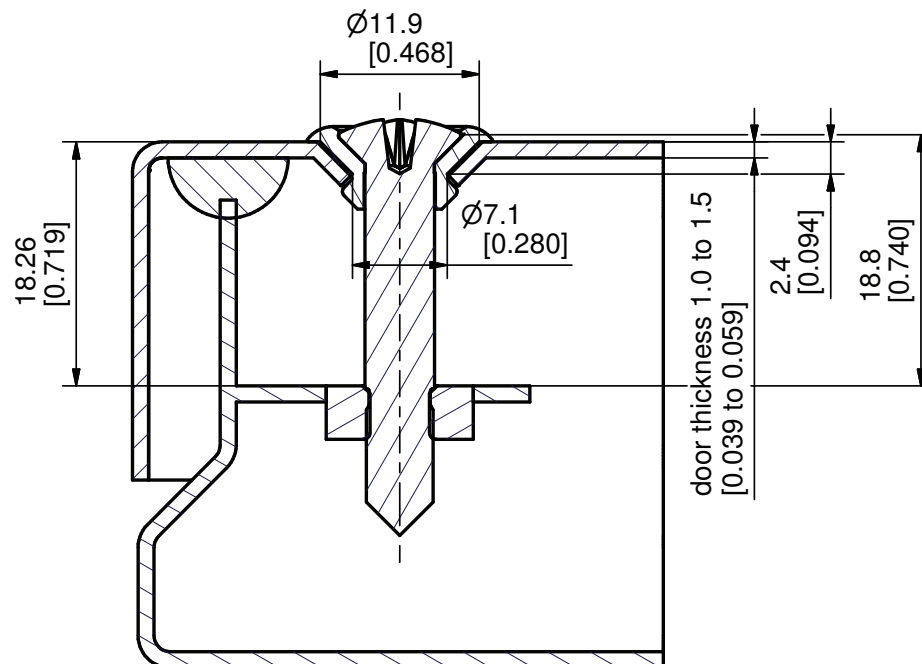
- Meets IP66 certification (applicable for installation example shown below with even compression of the foam/glued seal)
- Screw assembly consists of raised countersunk M5x30 Phillips H2 screw and sleeve
- Additional lengths and materials of the screw are available on request.

Material:

- **Raised countersunk screw:** Steel, Zinc Plated
- **Sleeve:** TPV / Santoprene



Example of application



version	Part No.	packing unit
a) Raised countersunk screw	202-1103.15-00530	1000
b) Sleeve	203-0655.61-00000	1000