

1-046SL Fastener SNAP-LINE 30x10

Tool-less installation, Hand removeable, One panel fastens with screws

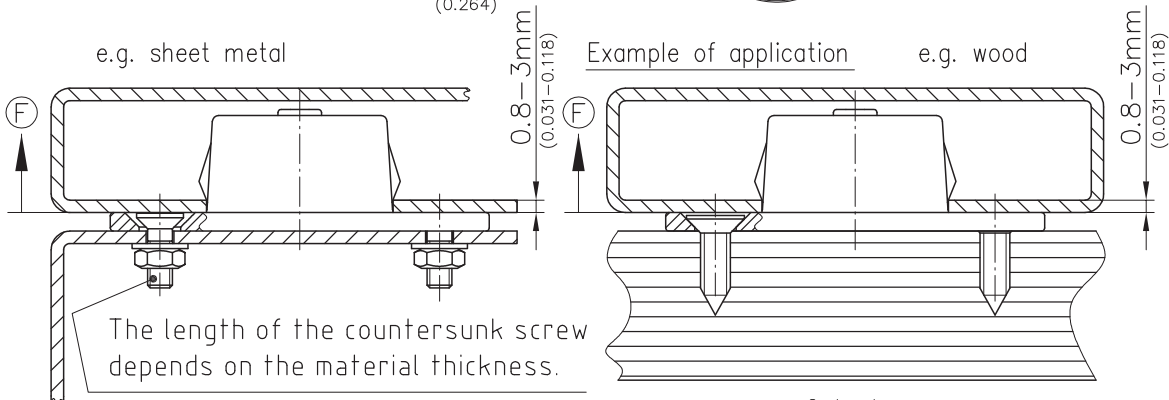
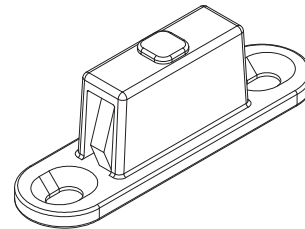
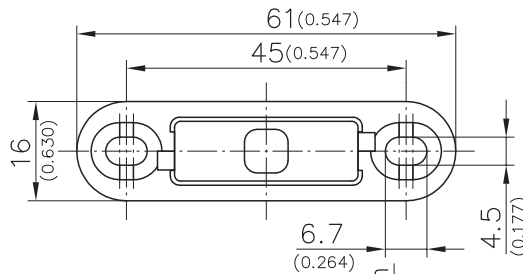
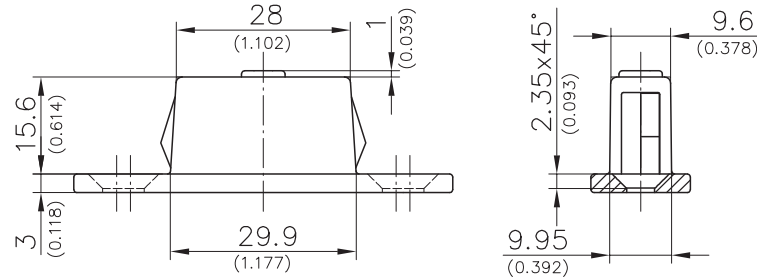


Product Notes:

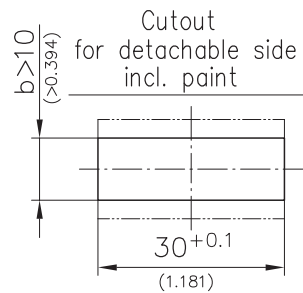
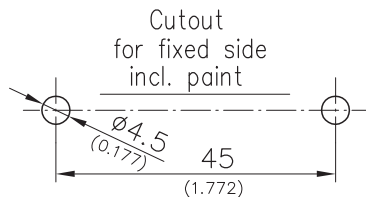
- Fastener has one fixed side and one detachable side
- Fixed side fastens to panel with countersunk M4 or wood screws
- Clamping Range 0.8mm - 3mm
- Width of cutout can be enlarged to adjust for possible misalignments
- Fastener available in 3 pull-out forces: ~15/30/50N. Fastener can be modified to obtain 70/90N
- Blind assembly possible
- Vibration resistant

Material:

- **Fastener SNAP-LINE:** Zinc Die, Black
- **Other surfaces and colors on request**
- **Wings:** Sintered Steel



The length of the countersunk screw depends on the material thickness.



Pull-off Force [Ⓕ]	Part No.	See Page
~15N	295-9002.00-00001	
~30N	295-9002.00-00003	
~50N	295-9002.00-00005	
Dual Fastener		08.19, 08.20