

1-044SL DUAL Fastener 30x10 SNAP-LINE

Tool-less installation, Tool removeable from back, Dual sided

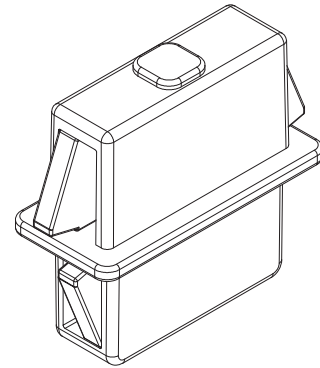
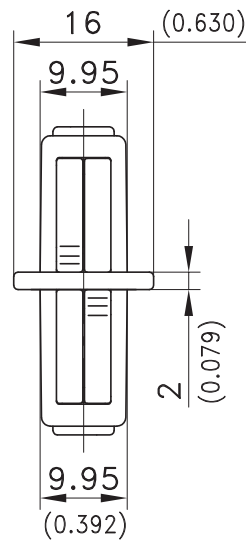
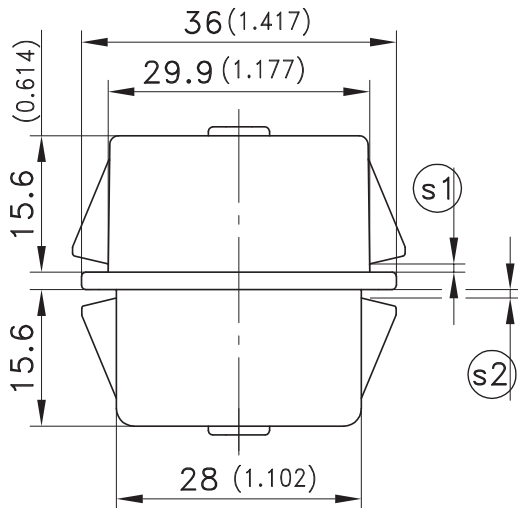


Product Notes:

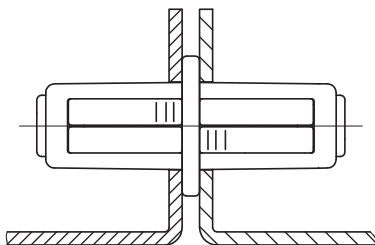
- Fastener for joining flat metal panels
- For tolerance compensation, one half of the housing is 2mm wider

Material:

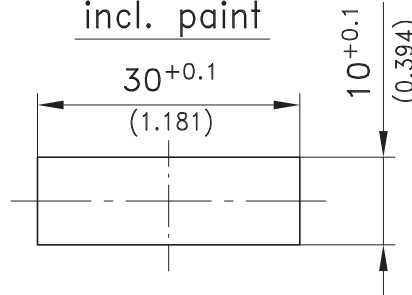
- **Housing:** Zinc Die, Black or PA Black
- **Wings:** Sintered Steel



Example of application



Cutout incl. paint



Clamping Range ^{Ⓢ1}	Clamping Range ^{Ⓢ2}	PA, Black	Zinc Die, Black	See Page
0.7 - 1.2	0.7 - 1.2	294-9102.52-10010	294-9107.33-10010	
1.2 - 1.7	1.2 - 1.7	294-9102.52-15015	294-9107.33-15015	
1.7 - 2.2	1.7 - 2.2	294-9102.52-20020	294-9107.33-20020	
2.2 - 2.7	2.2 - 2.7	294-9102.52-25025	294-9107.33-25025	
2.7 - 3.2	2.7 - 3.2	294-9102.52-30030	294-9107.33-30030	
4.7 - 5.2	4.7 - 5.2	on request	on request	

Other combinations of different clampings (^{Ⓢ1} + ^{Ⓢ2} dimensions) on request

Cover for cutout 30x10mm	292-0401.00-03010	292-0401.00-03010	10.14
Reinforcement plate for cutout 30x8 and 30x10mm	292-0702.15-01030	292-0702.15-01030	10.16
Tool for uninstallation	292-0306.80-02530	292-0306.80-02530	10.17