

1-042SL Fastener 30x10 SNAP-LINE

Tool-less installation, Tool removeable from back

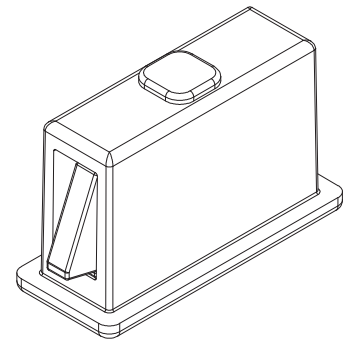
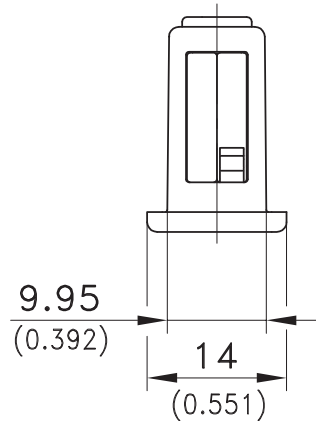
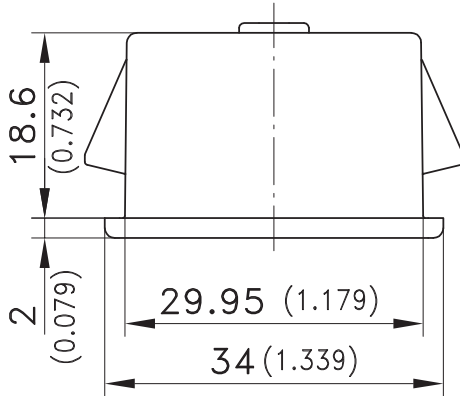


Product Notes:

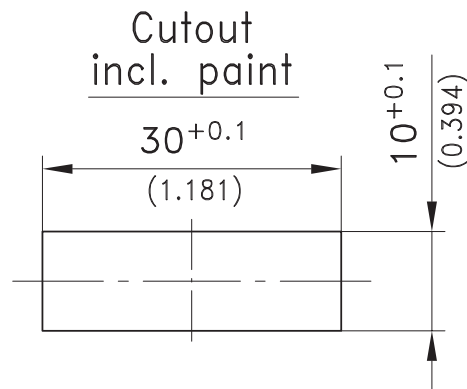
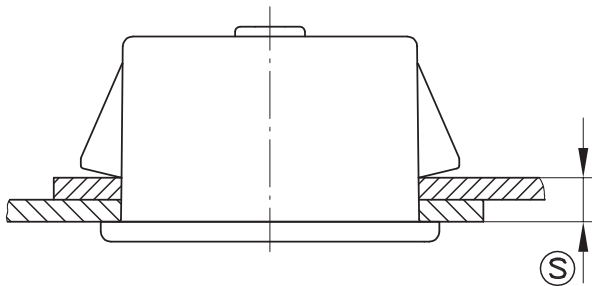
- Fastener for joining flat metal panels
- Fastener can be used when total thicknesses of panels does not exceed 8mm
- Join two metal panels by pushing the fastener through the cutouts

Material:

- **Housing:** Zinc Die, Black
- **Wings:** Sintered Steel



Example of application



Fastener	Clamping Range [Ⓢ]	Part No.	See Page
	3.7 - 4.2	294-9106.00-00040	
	4.2 - 4.7	294-9106.00-00045	
	4.7 - 5.2	294-9106.00-00050	
	5.2 - 5.7	294-9106.00-00055	
	5.7 - 6.2	294-9106.00-00060	
	7.7 - 8.2	294-9106.00-00080	
Other [Ⓢ] - dimensions on request			
Cover for cutout 30x10mm		292-0401.00-03010	10.14
Reinforcement plate for cutout 30x8 and 30x10mm		292-0702.15-01030	10.16
Tool for uninstallation		292-0306.80-02530	10.17