

1-041.06SL Captive Fastener 9.5 SNAP-LINE

Tool-less installation, Tool removeable from front, Captive in front panel, Pop-up when disengaged, Machinery safety compliant

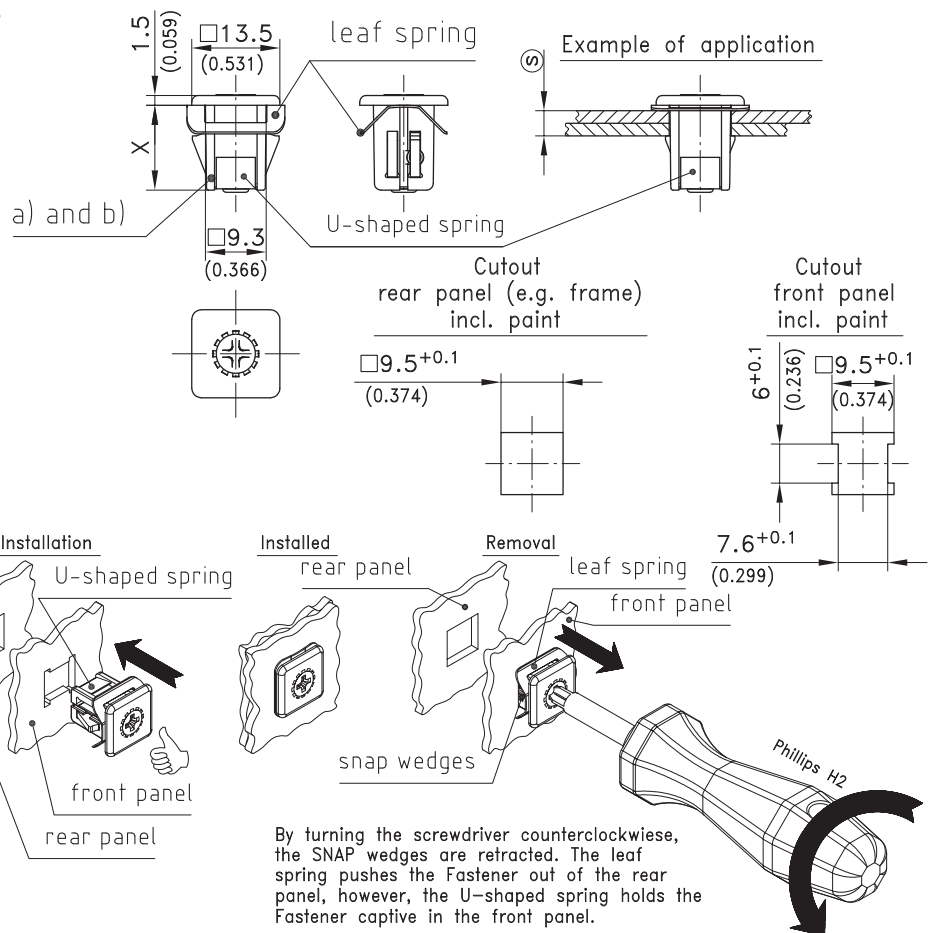
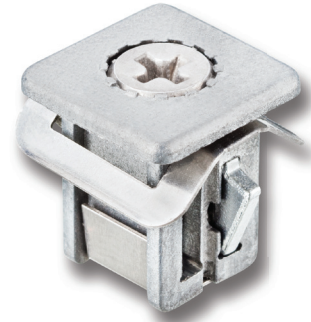


Product Notes:

- Fastener for joining flat metal panels
- Join two metal panels by pushing the fastener through the cutouts
- Fastener is disengaged from front with Phillips H2 screwdriver
- Leaf spring under head pushes fastener from front panel when fastener is disengaged
- **Machinery Directive 2006/42EC:**
To meet the Machinery Directive 2006/42EC the captive fastener is held in front panel by the U-shaped spring
- Captive fastener eliminates the concern of losing, dropping or misplacing hardware
- The dimension \textcircled{S} is the total thickness of both panels

Material:

- **Housing:** zinc die, untreated
- **Wings:** sintered steel
- **Insert:** Aluminium, hardened
- **U-shaped spring:** spring steel, zinc plated
- **Leaf spring:** stainless steel



By turning the screwdriver counterclockwise, the SNAP wedges are retracted. The leaf spring pushes the Fastener out of the rear panel, however, the U-shaped spring holds the Fastener captive in the front panel.

	dimension X in mm / inch	clamping range \textcircled{S}	Part No.
a) Captive Fastener with leaf spring	11 / 0.433	1.5 - 2.0	294-9112.00-00017*
	11 / 0.433	2.5 - 2.8	294-9112.00-00026
	11 / 0.433	2.9 - 3.2	294-9112.00-00030
	11 / 0.433	3.3 - 3.6	294-9112.00-00034
	11 / 0.433	4.1 - 4.4	294-9112.00-00042
b) Captive Fastener with leaf spring	13 / 0.512	3.5 - 4.0	294-9118.00-00037*
	13 / 0.512	4.5 - 4.8	294-9118.00-00046*
	13 / 0.512	4.9 - 5.2	294-9118.00-00050
	13 / 0.512	5.3 - 5.6	294-9118.00-00054
	13 / 0.512	6.1 - 6.4	294-9118.00-00062*

*Delivery time on request!