

1-041.05SL Fastener 9.5 SNAP-LINE

Tool-less installation, Tool removeable from front, Pop-up when disengaged

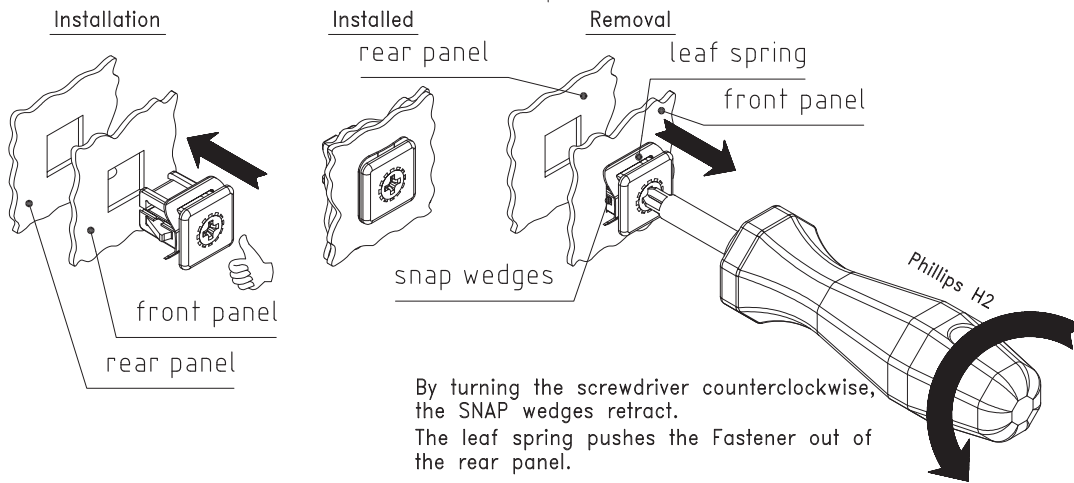
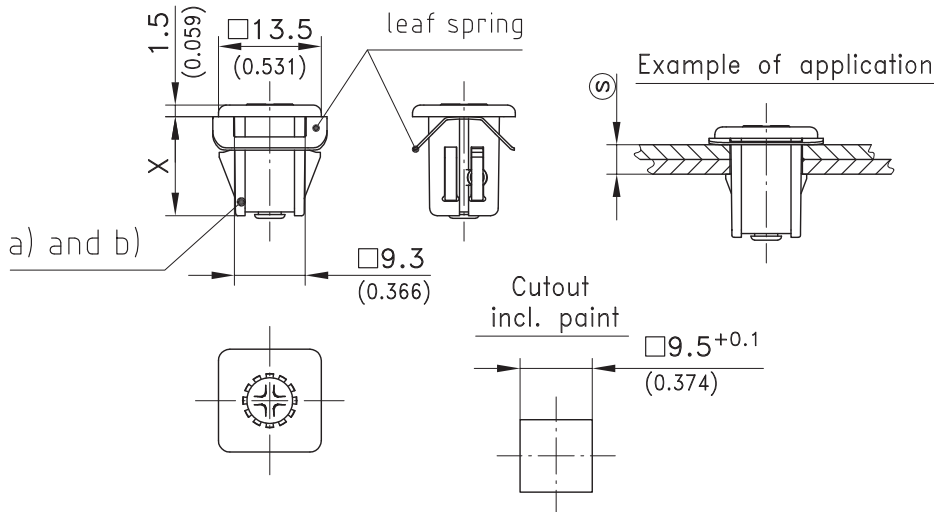
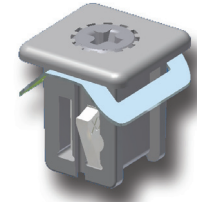
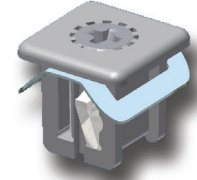


Product Notes:

- Fastener for joining flat metal panels
- Join two metal panels by pushing the fastener through the cutouts
- Save up to 90% assembly time
- Fastener is disengaged from front with Phillips H2 screwdriver
Leaf spring under head pushes fastener from front panel when fastener is disengaged
- The dimension \textcircled{S} is the total thickness of both panels

Material:

- **Housing:** Zinc Die, Untreated
- **Wings:** Sintered Steel
- **Leaf spring:** Stainless Steel
- **Insert:** Aluminium, Hardened



By turning the screwdriver counterclockwise, the SNAP wedges retract. The leaf spring pushes the Fastener out of the rear panel.

	dimension X in mm / inch	clamping range \textcircled{S}	Part No.
a) Fastener with leaf spring	11 / 0.433	1.5 - 2.0	294-9113.00-00017*
	11 / 0.433	2.5 - 2.8	294-9113.00-00026*
	11 / 0.433	2.9 - 3.2	294-9113.00-00030*
	11 / 0.433	3.3 - 3.6	294-9113.00-00034*
	11 / 0.433	4.1 - 4.4	294-9113.00-00042*
b) Fastener with leaf spring	13 / 0.512	3.5 - 4.0	294-9119.00-00037*
	13 / 0.512	4.5 - 4.8	294-9119.00-00046*
	13 / 0.512	4.9 - 5.2	294-9119.00-00050*
	13 / 0.512	5.3 - 5.6	294-9119.00-00054*
	13 / 0.512	6.1 - 6.4	294-9119.00-00062*

*Delivery time on request!