

1-041.04SL Fastener 9.5 SNAP-LINE

Tool-less installation, Tool removeable from front

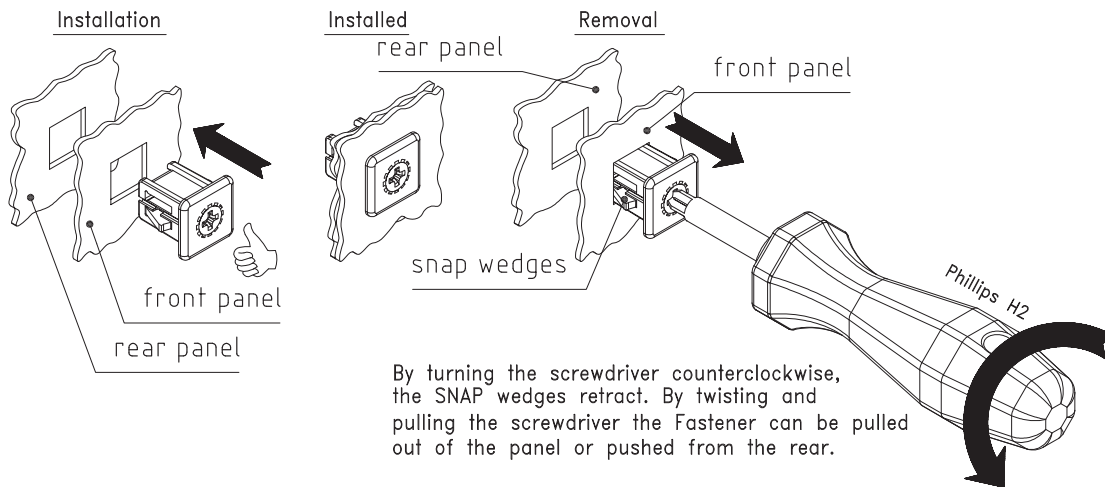
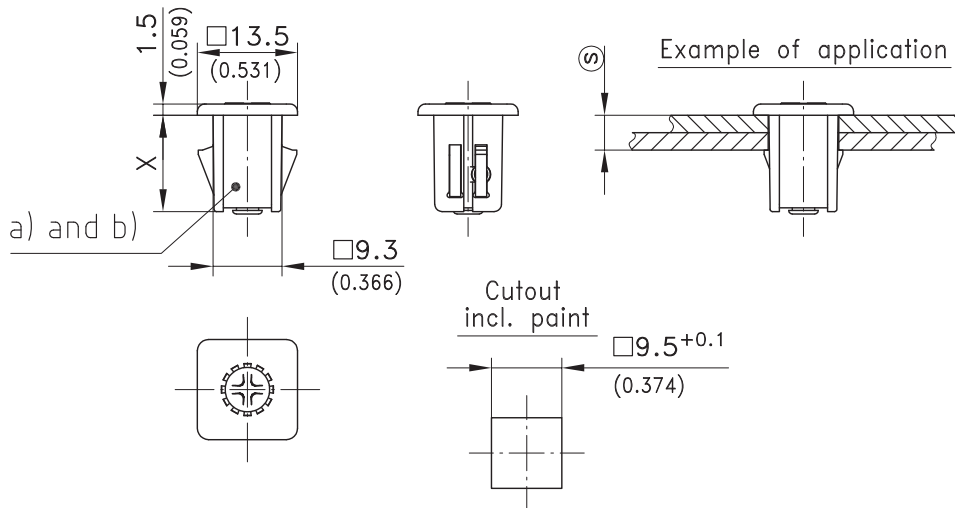
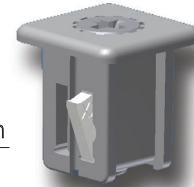
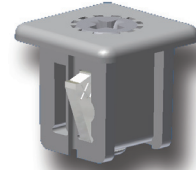


Product Notes:

- Fastener for joining flat metal panels
- Join two metal panels by pushing the fastener through the cutouts
- Fastener is disengaged from front with Phillips H2 screwdriver
- The dimension \textcircled{S} is the total thickness of both panels

Material:

- **Housing:** Zinc Die, Untreated
- **Wings:** Sintered Steel
- **Insert:** Aluminium, Hardened



	dimension X in mm / inch	clamping range \textcircled{S}	Part No.
a) Fastener without leaf spring	11 / 0.433	2.0 - 2.5	294-9114.00-00022*
	11 / 0.433	3.0 - 3.3	294-9114.00-00031*
	11 / 0.433	3.4 - 3.7	294-9114.00-00035*
	11 / 0.433	3.8 - 4.1	294-9114.00-00039*
	11 / 0.433	4.6 - 4.9	294-9114.00-00047*
b) Fastener without leaf spring	13 / 0.512	4.0 - 4.5	294-9120.00-00042*
	13 / 0.512	5.0 - 5.3	294-9120.00-00051*
	13 / 0.512	5.4 - 5.7	294-9120.00-00055*
	13 / 0.512	5.8 - 6.1	294-9120.00-00059*
	13 / 0.512	6.6 - 6.9	294-9120.00-00067*

*Delivery time on request!